

National Survey of Student Engagement (NSSE) 2003 Results

The National Survey of Student Engagement (NSSE) is a survey that assesses student engagement in educational practices that are associated with high levels of learning and development.

- Evergreen seniors and first-year students have participated in the NSSE since 2000.
- NSSE has developed five benchmarks of effective educational practice that are computed based on the results of clusters of individual survey questions.
- The survey is conducted by an independent, third party organization that is supported by grants from The Pew Charitable Trusts, Lumina Foundation for Education, and the Center for Inquiry in the Liberal Arts at Wabash College. It is co-sponsored by the Carnegie Foundation for the Advancement of Teaching and the Pew Forum on Undergraduate Learning.

Response Rate 2003

NSSE determines sample size based on total undergraduate enrollment during fall quarter. Since Evergreen had 4081 undergraduates in Fall 2002, NSSE randomly selected an original sample of 700 students, which was split evenly between first-year and senior students. The sample is then adjusted for non-deliverable addresses. Of the adjusted sample of 662 students, 248 completed the survey, which is an overall response rate of 37%.

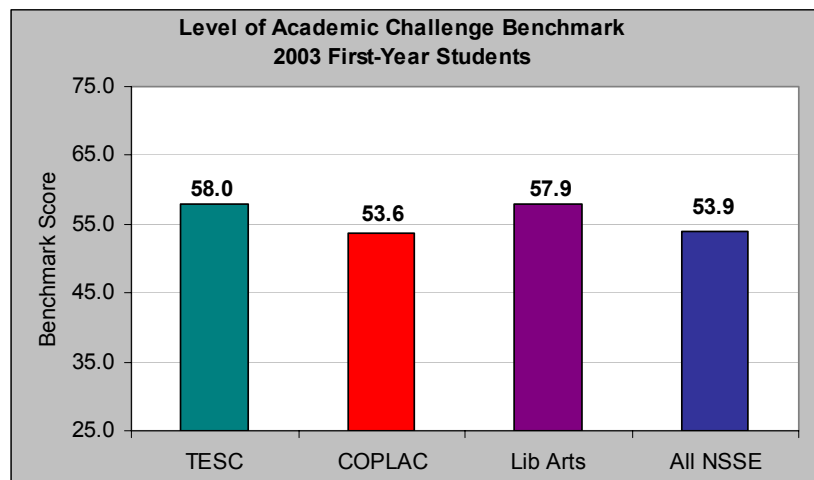
Class category	Number at Evergreen Fall 2002	Number in Adjusted Sample*	NSSE completers	NSSE response rate	% of all students enrolled Fall 02
First-year	492	321	107	33%	22%
Seniors (degree-seeking)	830	341	141	41%	17%

**Notes: due to third-party administration of this survey, students who indicate confidentiality on their student records are excluded from potential sample selection. Students with non-deliverable addresses are excluded from the "adjusted sample."*

Benchmarks of Student Engagement

The following tables show the means scores for the individual benchmark items for Evergreen, Council of Public Liberal Arts Colleges (COPLAC), Baccalaureate-Liberal Arts Colleges, and all 437 national schools that participated in the NSSE.

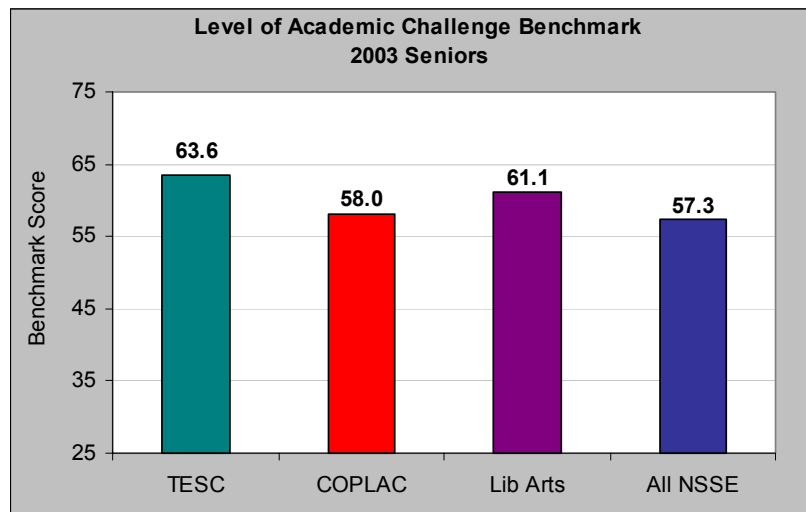
Level of Academic Challenge Benchmark



Means for First-time, First-Year Students

Academic Challenge Benchmark Items	Evergreen	COPLAC	All Liberal Arts	All NSSE Schools
Preparing for class (studying, reading, writing, rehearsing, and other activities related to academic program) <i>8-point scale: 1=0 hrs/wk, 2=1-5 hrs/wk, 3=6-10 hrs/week, 4=11-15 hrs/wk, 5=16-20 hrs/wk, 6=21-25 hrs/wk, 7=26-30 hrs/wk, 8=more than 30 hrs/wk</i>	4.49	4.09	4.60	4.11
Number of assigned textbooks, books, or book-length pack or course readings <i>5-point scale: 1=None, 2=between 1-4, 3=between 5 and 10, 4=between 11 and 20, 5=more than 20</i>	3.95	3.54*	3.81	3.49*
Number of written papers or reports of 20 pages or more <i>5-point scale: 1=None, 2=between 1-4, 3=between 5 and 10, 4=between 11 and 20, 5=more than 20</i>	1.20	1.23	1.20	1.24
Number of written papers or reports between 5 and 19 pages <i>5-point scale: 1=None, 2=between 1-4, 3=between 5 and 10, 4=between 11 and 20, 5=more than 20</i>	2.41	2.43	2.65*	2.44
Number of written papers of fewer than 5 pages <i>5-point scale: 1=None, 2=between 1-4, 3=between 5 and 10, 4=between 11 and 20, 5=more than 20</i>	3.51	3.31	3.44	3.30
Coursework emphasized analyzing basic elements of an idea, experience, or theory <i>4-point scale: 1=Very little, 2=Some, 3=Quite a bit, 4=Very much</i>	3.47	3.11*	3.32	3.15*
Coursework emphasized synthesizing and organizing ideas, information, or experiences into new, more complex interpretations and relationships <i>4-point scale: 1=Very little, 2=Some, 3=Quite a bit, 4=Very much</i>	3.37	2.81*	3.06*	2.88*
Coursework emphasized making judgments about the value of information, arguments, or methods <i>4-point scale: 1=Very little, 2=Some, 3=Quite a bit, 4=Very much</i>	2.95	2.75	2.93	2.83
Coursework emphasized applying theories or concepts to practical problems or in new situations <i>4-point scale: 1=Very little, 2=Some, 3=Quite a bit, 4=Very much</i>	3.08	2.95	3.09	3.01
Worked harder than you thought you could to meet an instructor's standards or expectations <i>4-point scale: 1=Never, 2=Sometimes, 3=Often, 4=Very often</i>	2.53	2.56	2.68	2.61
Campus environment emphasizes spending significant amounts of time studying and on academic work <i>4-point scale: 1=Very little, 2=Some, 3=Quite a bit, 4=Very much</i>	2.91	3.17*	3.35*	3.18*

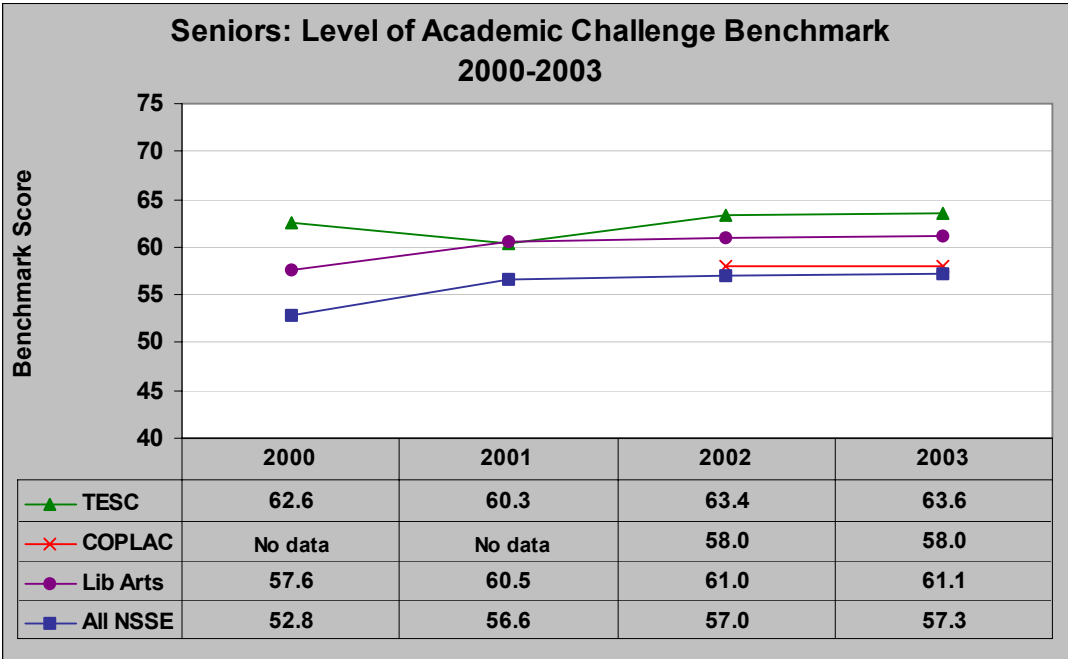
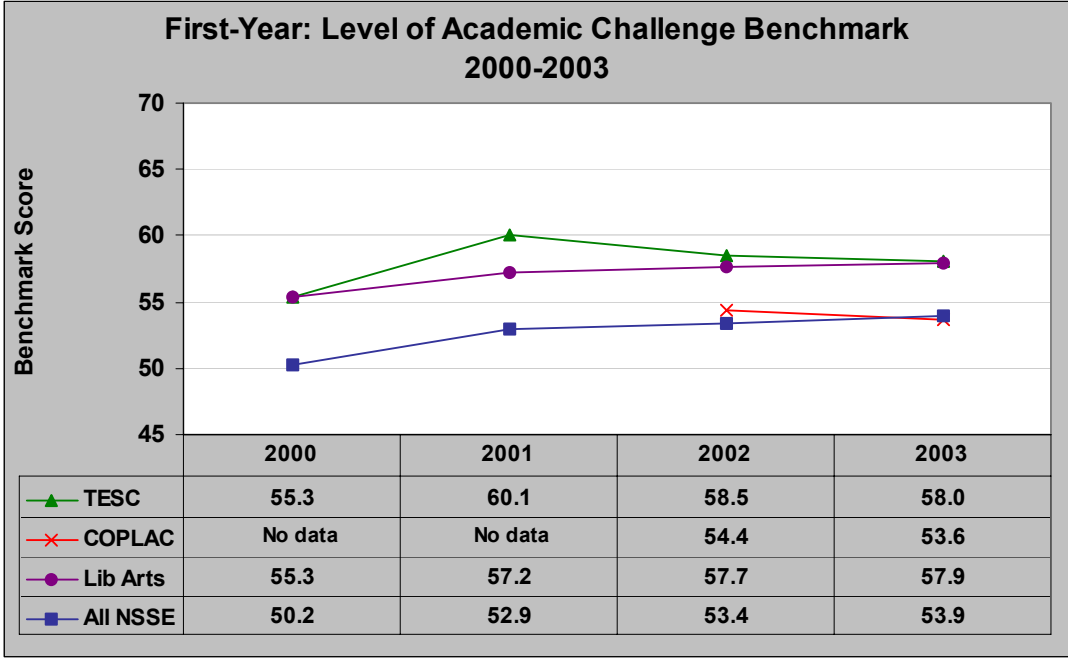
* Item showed significant difference for Evergreen vs. this comparison group of schools at $p < .01$.



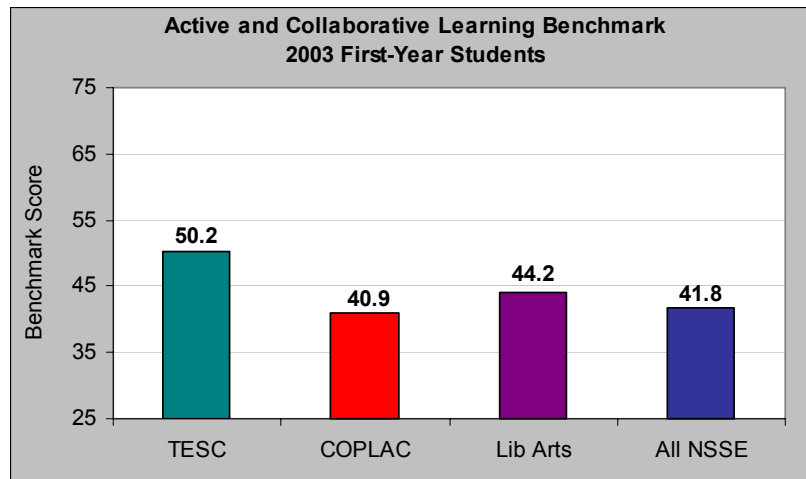
Means for Seniors

Academic Challenge Benchmark Items	Evergreen	COPLAC	All Liberal Arts	All NSSE Schools
Preparing for class (studying, reading, writing, rehearsing, and other activities related to academic program) <i>8-point scale: 1=0 hrs/wk, 2= 1-5 hrs/wk, 3=6-10 hrs/week, 4=11-15 hrs/wk, 5=16-20 hrs/wk, 6=21-25 hrs/wk, 7=26-30 hrs/wk, 8=more than 30 hrs/wk</i>	5.14	4.18*	4.53*	4.12*
Number of assigned textbooks, books, or book-length pack or course readings <i>5-point scale: 1=None, 2=between 1-4, 3=between 5 and 10, 4=between 11 and 20, 5=more than 20</i>	3.82	3.43*	3.70	3.33*
Number of written papers or reports of 20 pages or more <i>5-point scale: 1=None, 2=between 1-4, 3=between 5 and 10, 4=between 11 and 20, 5=more than 20</i>	1.53	1.74*	1.75*	1.66
Number of written papers or reports between 5 and 19 pages <i>5-point scale: 1=None, 2=between 1-4, 3=between 5 and 10, 4=between 11 and 20, 5=more than 20</i>	2.45	2.74*	2.91*	2.66
Number of written papers of fewer than 5 pages <i>5-point scale: 1=None, 2=between 1-4, 3=between 5 and 10, 4=between 11 and 20, 5=more than 20</i>	3.47	3.11*	3.22	3.11*
Coursework emphasized analyzing basic elements of an idea, experience, or theory <i>4-point scale: 1=Very little, 2=Some, 3=Quite a bit, 4=Very much</i>	3.58	3.30*	3.40*	3.28*
Coursework emphasized synthesizing and organizing ideas, information, or experiences into new, more complex interpretations and relationships <i>4-point scale: 1=Very little, 2=Some, 3=Quite a bit, 4=Very much</i>	3.58	3.11*	3.24*	3.07*
Coursework emphasized making judgments about the value of information, arguments, or methods <i>4-point scale: 1=Very little, 2=Some, 3=Quite a bit, 4=Very much</i>	3.06	2.99	3.06	2.95
Coursework emphasized applying theories or concepts to practical problems or in new situations <i>4-point scale: 1=Very little, 2=Some, 3=Quite a bit, 4=Very much</i>	3.39	3.16*	3.25	3.20*
Worked harder than you thought you could to meet an instructor's standards or expectations. <i>4-point scale: 1=Never, 2=Sometimes, 3=Often, 4=Very often</i>	2.91	2.70*	2.72	2.71*
Campus environment emphasizes spending significant amounts of time studying and on academic work <i>4-point scale: 1=Very little, 2=Some, 3=Quite a bit, 4=Very much</i>	3.22	3.16	3.32	3.15

* Item showed significant difference for Evergreen vs. this comparison group of schools at $p < .01$.



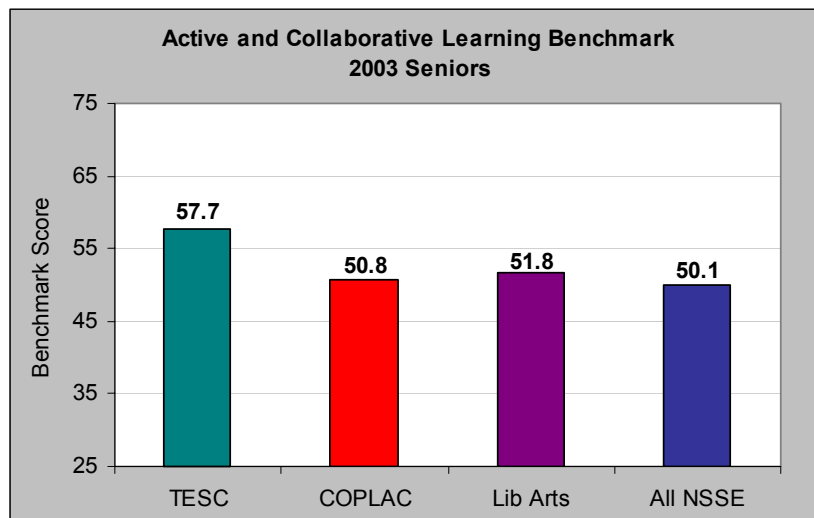
Active and Collaborative Learning Benchmark



Means for First-time, First-Year Students

Active and Collaborative Learning Benchmark Items	Evergreen	COPLAC	All Liberal Arts	All NSSE Schools
Asked questions in class or contributed to class discussions <i>4-point scale: 1=Never, 2=Sometimes, 3=Often, 4=Very often</i>	3.19	2.79*	3.07	2.84*
Made a class presentation <i>4-point scale: 1=Never, 2=Sometimes, 3=Often, 4=Very often</i>	2.55	2.17*	2.23*	2.24*
Worked with other students on projects during class <i>4-point scale: 1=Never, 2=Sometimes, 3=Often, 4=Very often</i>	2.58	2.27*	2.21*	2.34*
Worked with other students outside of class to prepare assignments <i>4-point scale: 1=Never, 2=Sometimes, 3=Often, 4=Very often</i>	2.70	2.36*	2.57	2.40*
Tutored or taught other students (paid or voluntary) <i>4-point scale: 1=Never, 2=Sometimes, 3=Often, 4=Very often</i>	1.50	1.56	1.74*	1.68
Participated in a community-based project as part of a regular course <i>4-point scale: 1=Never, 2=Sometimes, 3=Often, 4=Very often</i>	1.78	1.36*	1.48*	1.46*
Discussed ideas from your readings or classes with others outside of class <i>4-point scale: 1=Never, 2=Sometimes, 3=Often, 4=Very often</i>	3.25	2.80*	2.95*	2.76*

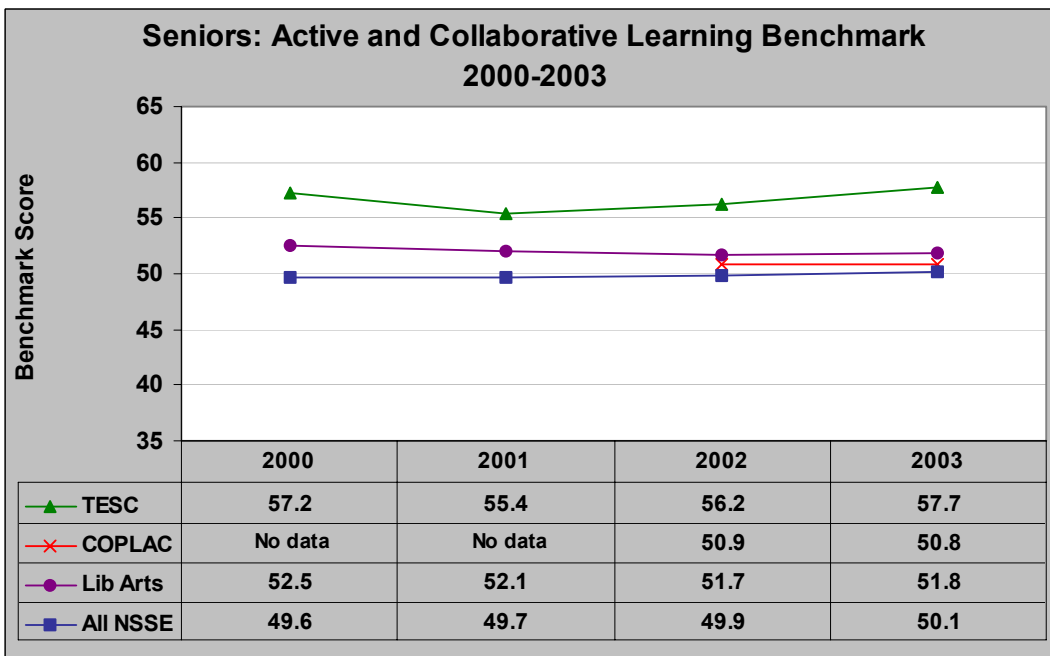
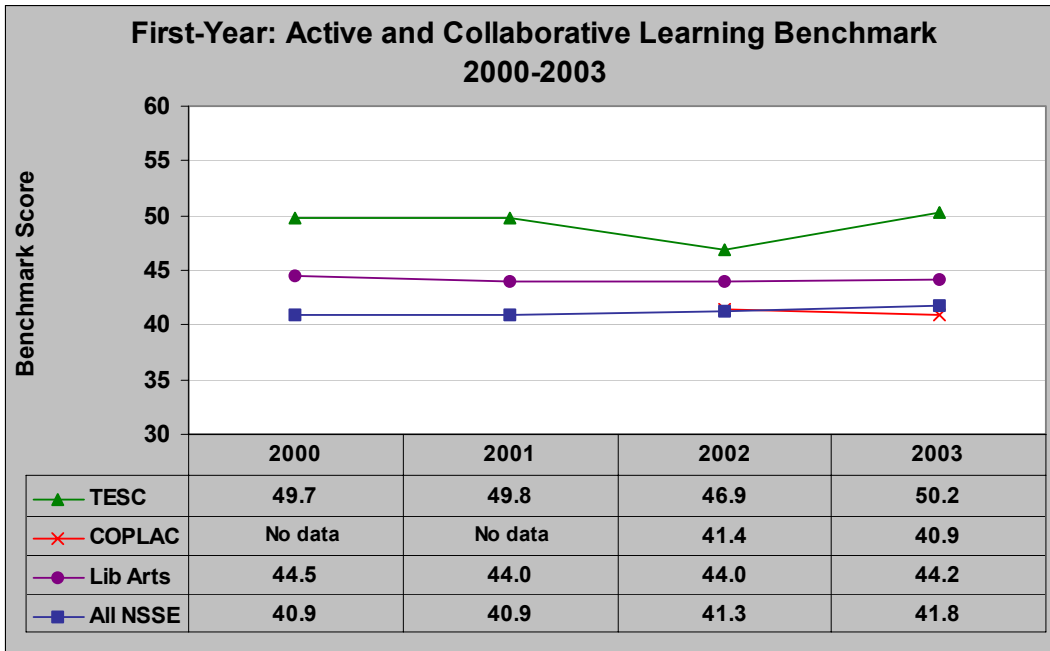
* Item showed significant difference for Evergreen vs. this comparison group of schools at $p < .01$.



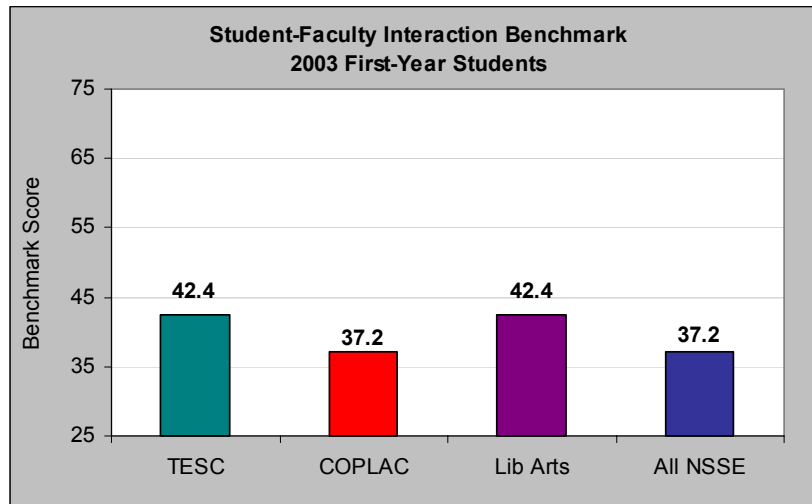
Means for Seniors

Active and Collaborative Learning Benchmark Items	Evergreen	COPLAC	All Liberal Arts	All NSSE Schools
Asked questions in class or contributed to class discussions <i>4-point scale: 1=Never, 2=Sometimes, 3=Often, 4=Very often</i>	3.32	3.17	3.29	3.12*
Made a class presentation <i>4-point scale: 1=Never, 2=Sometimes, 3=Often, 4=Very often</i>	2.88	2.87	2.81	2.84
Worked with other students on projects during class <i>4-point scale: 1=Never, 2=Sometimes, 3=Often, 4=Very often</i>	3.02	2.46*	2.26*	2.46*
Worked with other students outside of class to prepare assignments <i>4-point scale: 1=Never, 2=Sometimes, 3=Often, 4=Very often</i>	2.88	2.70	2.71	2.73
Tutored or taught other students (paid or voluntary) <i>4-point scale: 1=Never, 2=Sometimes, 3=Often, 4=Very often</i>	2.04	1.86	2.05	1.87
Participated in a community-based project as part of a regular course <i>4-point scale: 1=Never, 2=Sometimes, 3=Often, 4=Very often</i>	1.80	1.61*	1.64	1.63
Discussed ideas from your readings or classes with others outside of class <i>4-point scale: 1=Never, 2=Sometimes, 3=Often, 4=Very often</i>	3.25	2.91*	3.05*	2.88*

* Item showed significant difference for Evergreen vs. this comparison group of schools at $p < .01$.



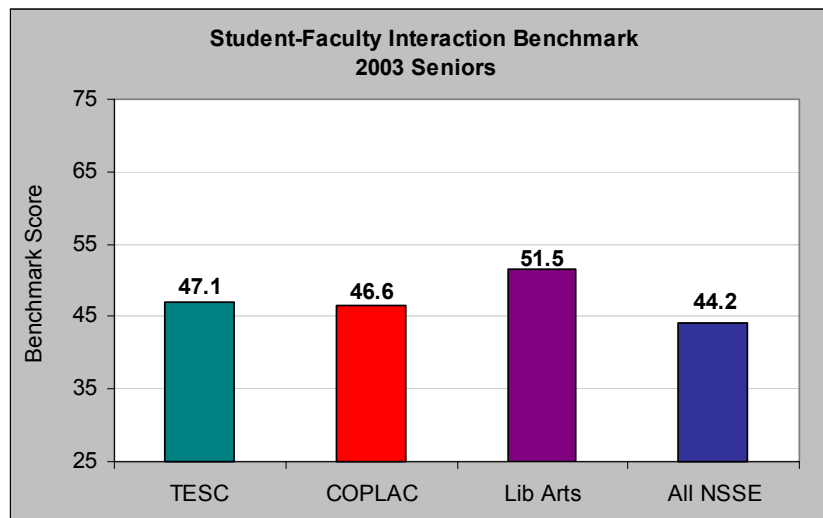
Student-Faculty Interactions Benchmark



Means for First-time, First-Year Students

Student-Faculty Interactions Benchmark Items	Evergreen	COPLAC	All Liberal Arts	All NSSE Schools
Discussed grades or assignments with an instructor <i>4-point scale: 1=Never, 2=Sometimes, 3=Often, 4=Very often</i>	2.91	2.56*	2.75	2.62*
Talked about career plans with a faculty member or advisor <i>4-point scale: 1=Never, 2=Sometimes, 3=Often, 4=Very often</i>	2.00	2.05	2.26*	2.15
Discussed ideas from your reading or classes with faculty members outside of class <i>4-point scale: 1=Never, 2=Sometimes, 3=Often, 4=Very often</i>	2.07	1.77*	2.01	1.81*
Received prompt feedback from faculty on your academic performance <i>4-point scale: 1=Never, 2=Sometimes, 3=Often, 4=Very often</i>	3.01	2.64*	2.82	2.63*
Worked with faculty on activities other than coursework (committees, orientation, student activities, etc.) <i>4-point scale: 1=Never, 2=Sometimes, 3=Often, 4=Very often</i>	1.47	1.49	1.73*	1.56
Have you worked or do you plan to work on a research project with a faculty member outside of course or program requirements? <i>% of students who replied "Yes"</i>	39%	30%	38%	29%

* Item showed significant difference for Evergreen vs. this comparison group of schools at $p < .01$.

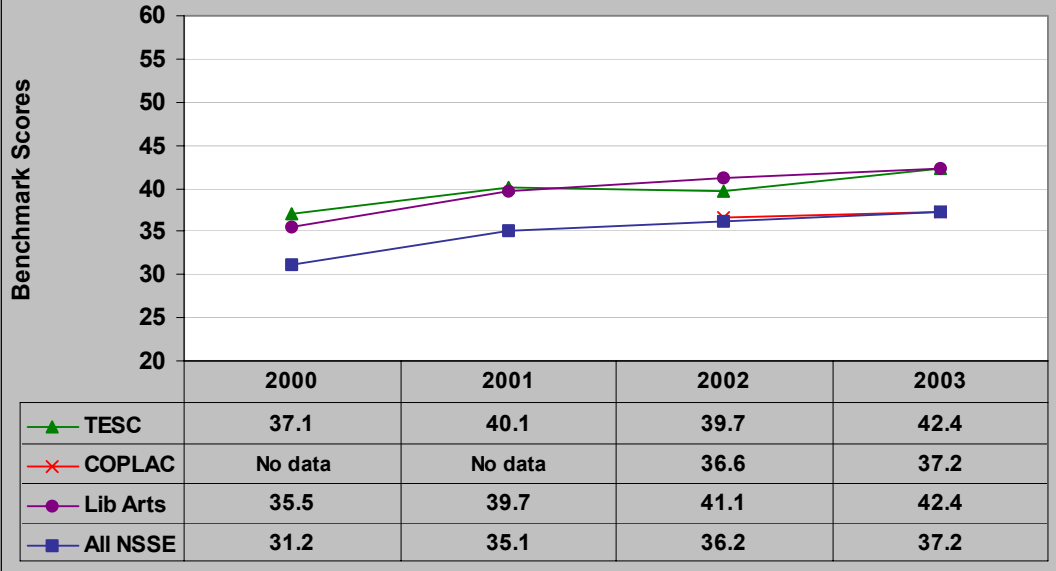


Means for Seniors

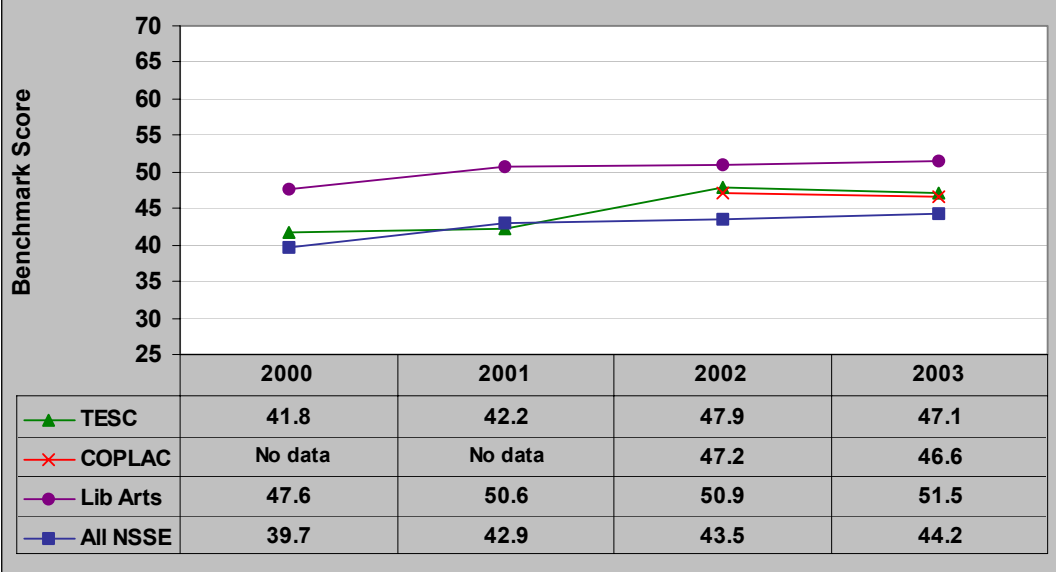
Student-Faculty Interactions Benchmark Items	Evergreen	COPLAC	All Liberal Arts	All NSSE Schools
Discussed grades or assignments with an instructor <i>4-point scale: 1=Never, 2=Sometimes, 3=Often, 4=Very often</i>	2.93	2.86	2.94	2.83
Talked about career plans with a faculty member or advisor <i>4-point scale: 1=Never, 2=Sometimes, 3=Often, 4=Very often</i>	2.42	2.53	2.75*	2.48
Discussed ideas from your reading or classes with faculty members outside of class <i>4-point scale: 1=Never, 2=Sometimes, 3=Often, 4=Very often</i>	2.28	2.16	2.35	2.10
Received prompt feedback from faculty on your academic performance <i>4-point scale: 1=Never, 2=Sometimes, 3=Often, 4=Very often</i>	3.15	2.91*	2.99	2.83*
Worked with faculty on activities other than coursework (committees, orientation, student activities, etc.) <i>4-point scale: 1=Never, 2=Sometimes, 3=Often, 4=Very often</i>	1.63	1.88*	2.16*	1.85*
Have you worked or do you plan to work on a research project with a faculty member outside of course or program requirements? <i>% of students who replied "Yes"</i>	36%	34%	39%	27%

* Item showed significant difference for Evergreen vs. this comparison group of schools at $p < .01$.

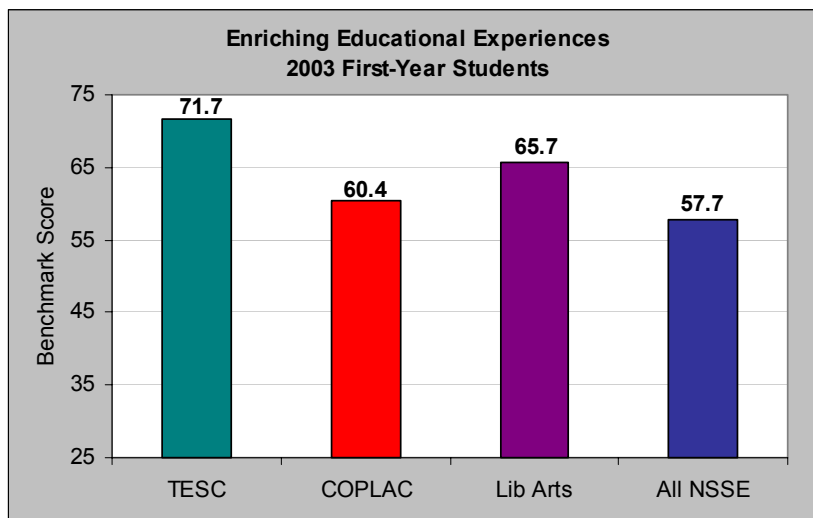
First-Year: Student-Faculty Interaction Benchmark 2000-2003



Seniors: Student-Faculty Interaction Benchmark 2000-2003



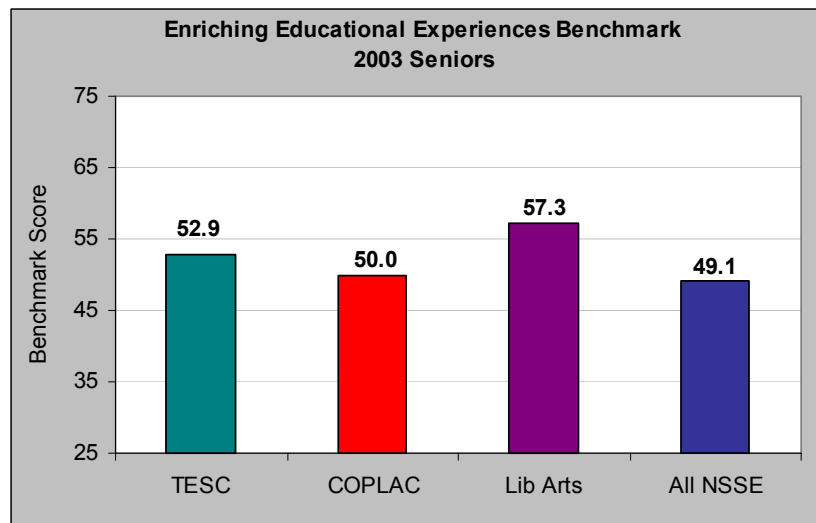
Enriching Educational Experiences Benchmark



Means for First-time, First-Year Students

Enriching Educational Experiences Benchmark Items	Evergreen	COPLAC	All Liberal Arts	All NSSE Schools
Participating in co-curricular activities (organizations, publications, student government, sports, etc.) <i>8-point scale: 1=0 hrs/wk, 2=1-5 hrs/wk, 3=6-10 hrs/week, 4=11-15 hrs/wk, 5=16-20 hrs/wk, 6=21-25 hrs/wk, 7=26-30 hrs/wk, 8=more than 30 hrs/wk</i>	1.88	2.37*	2.79*	2.28*
Have done or plan to do practicum, internship, field experience, co-op experience, or clinical assignment <i>% of students who replied "Yes"</i>	69%	79%	82%*	81%*
Have done or plan to do community service or volunteer work <i>% of students who replied "Yes"</i>	69%	76%	82%*	75%
Have done or plan to do foreign language coursework <i>% of students who replied "Yes"</i>	46%	52%	67%*	48%
Have done or plan to do study abroad <i>% of students who replied "Yes"</i>	53%	43%	56%	38%*
Have done or plan to do independent study or self-designed major <i>% of students who replied "Yes"</i>	63%	21%*	24%*	18%*
Have done or plan to do culminating senior experience (comprehensive exam, capstone course, thesis, project, etc.) <i>% of students who replied "Yes"</i>	36%	46%	57%*	43%
Serious conversations with students who are very different from you in terms of their religious beliefs, political opinions, or personal values <i>4-point scale: 1=Never, 2=Sometimes, 3=Often, 4=Very often</i>	3.05	2.83	2.99	2.77*
Serious conversations with students of a different race or ethnicity <i>4-point scale: 1=Never, 2=Sometimes, 3=Often, 4=Very often</i>	3.12	2.54*	2.75*	2.61*
Used an electronic medium (list-serv, chat group, Internet, etc.) to discuss or complete an assignment <i>4-point scale: 1=Never, 2=Sometimes, 3=Often, 4=Very often</i>	2.61	2.67	2.65	2.65
Campus environment encourages contact among students from different economic, social, and racial or ethnic backgrounds <i>4-point scale: 1=Very little, 2=Some, 3=Quite a bit, 4=Very much</i>	3.12	2.49*	2.73*	2.59*

* Item showed significant difference for Evergreen vs. this comparison group of schools at $p < .01$.

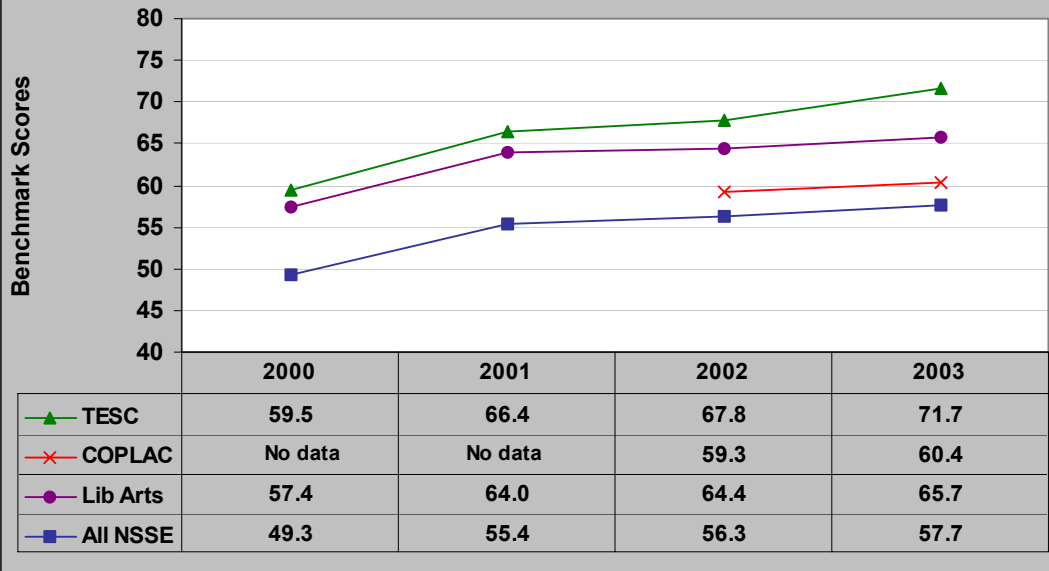


Means for Seniors

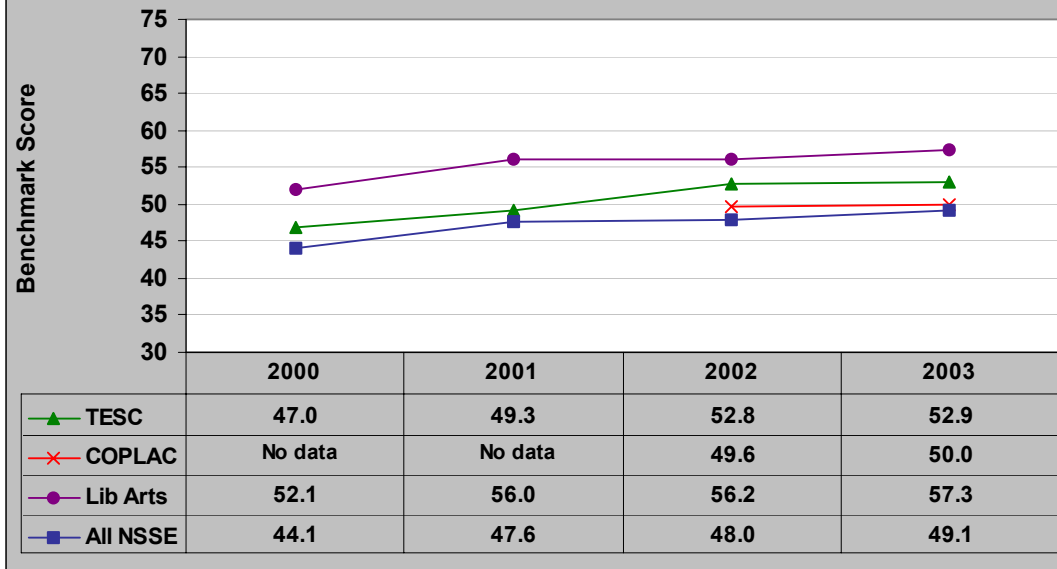
Enriching Educational Experiences Benchmark Items	Evergreen	COPLAC	All Liberal Arts	All NSSE Schools
Participating in co-curricular activities (organizations, publications, student government, sports, etc.) <i>8-point scale: 1=0 hrs/wk, 2= 1-5 hrs/wk, 3=6-10 hrs/week, 4=11-15 hrs/wk, 5=16-20 hrs/wk, 6=21-25 hrs/wk, 7=26-30 hrs/wk, 8=more than 30 hrs/wk</i>	1.51	2.24*	2.75*	2.17*
Have done or plan to do practicum, internship, field experience, co-op experience, or clinical assignment <i>% of students who replied "Yes"</i>	67%	70%	74%	72%
Have done or plan to do community service or volunteer work <i>% of students who replied "Yes"</i>	60%	67%	77%*	66%
Have done or plan to do foreign language coursework <i>% of students who replied "Yes"</i>	34%	45%	65%*	41%
Have done or plan to do study abroad <i>% of students who replied "Yes"</i>	26%	18%	35%	18%
Have done or plan to do independent study or self-designed major <i>% of students who replied "Yes"</i>	71%	36%*	42%*	29%*
Have done or plan to do culminating senior experience (comprehensive exam, capstone course, thesis, project, etc.) <i>% of students who replied "Yes"</i>	36%	64%*	74%*	59%*
Serious conversations with students who are very different from you in terms their religious beliefs, political opinions, or personal values <i>4-point scale: 1=Never, 2=Sometimes, 3=Often, 4=Very often</i>	2.88	2.73	2.90	2.69
Serious conversations with students of a different race or ethnicity <i>4-point scale: 1=Never, 2=Sometimes, 3=Often, 4=Very often</i>	2.83	2.51*	2.71	2.60*
Used an electronic medium (list-serv, chat group, Internet, etc.) to discuss or complete an assignment <i>4-point scale: 1=Never, 2=Sometimes, 3=Often, 4=Very often</i>	2.67	2.82	2.73	2.81
Campus environment encourages contact among students from different economic, social, and racial or ethnic backgrounds <i>4-point scale: 1=Very little, 2=Some, 3=Quite a bit, 4=Very much</i>	3.06	2.29*	2.49*	2.39*

* Item showed significant difference for Evergreen vs. this comparison group of schools at $p < .01$.

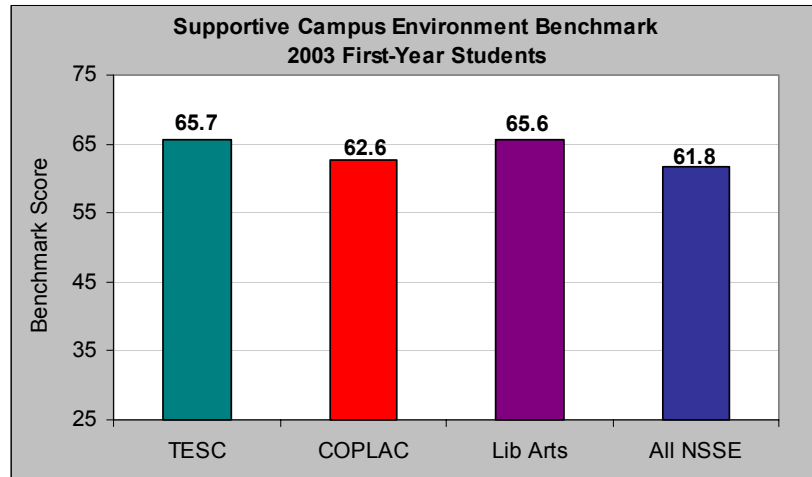
First-Year: Enriching Educational Experiences Benchmark 2000-2003



Seniors: Enriching Educational Experiences Benchmark 2000-2003



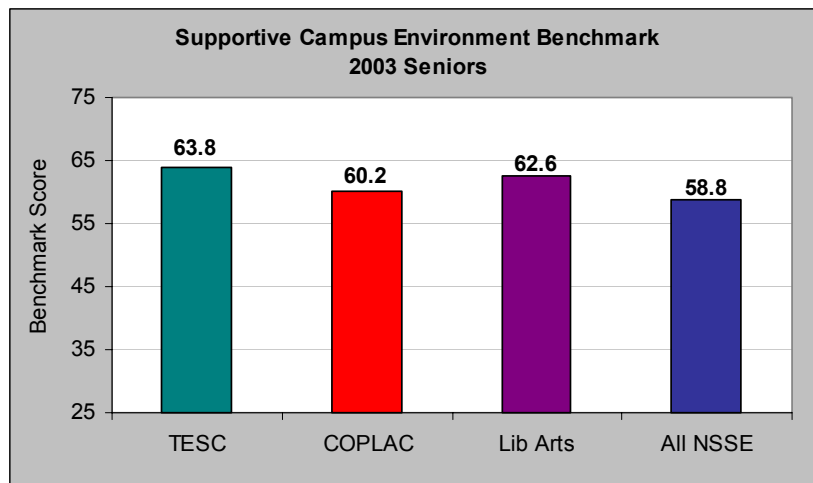
Supportive Campus Environment Benchmark



Means for First-time, First-year Students

Supportive Campus Environment Benchmark Items	Evergreen	COPLAC	All Liberal Arts	All NSSE Schools
Quality of relationships with other students <i>(1=unfriendly, unsupportive, sense of alienation to 7=friendly, supportive, sense of belonging)</i>	5.64	5.79	5.86	5.74
Quality of relationships with faculty members <i>(1=unavailable, unhelpful, unsympathetic to 7=available, helpful, sympathetic)</i>	5.86	5.57*	5.88	5.56
Quality of relationships with administrative personnel and offices <i>(1=unhelpful, inconsiderate, rigid to 7=helpful, considerate, flexible)</i>	5.48	5.06*	5.32	5.09*
Campus environment provides the support you need to help you succeed academically <i>4-point scale: 1=Very little, 2=Some, 3=Quite a bit, 4=Very much</i>	3.23	3.09	3.32	3.09
Campus environment helps you cope with your non-academic responsibilities (work, family, etc.) <i>4-point scale: 1=Very little, 2=Some, 3=Quite a bit, 4=Very much</i>	2.24	2.07	2.24	2.11
Campus environment provides the support you need to thrive socially <i>4-point scale: 1=Very little, 2=Some, 3=Quite a bit, 4=Very much</i>	2.38	2.36	2.45	2.34

* Item showed significant difference for Evergreen vs. this comparison group of schools at $p < .01$.

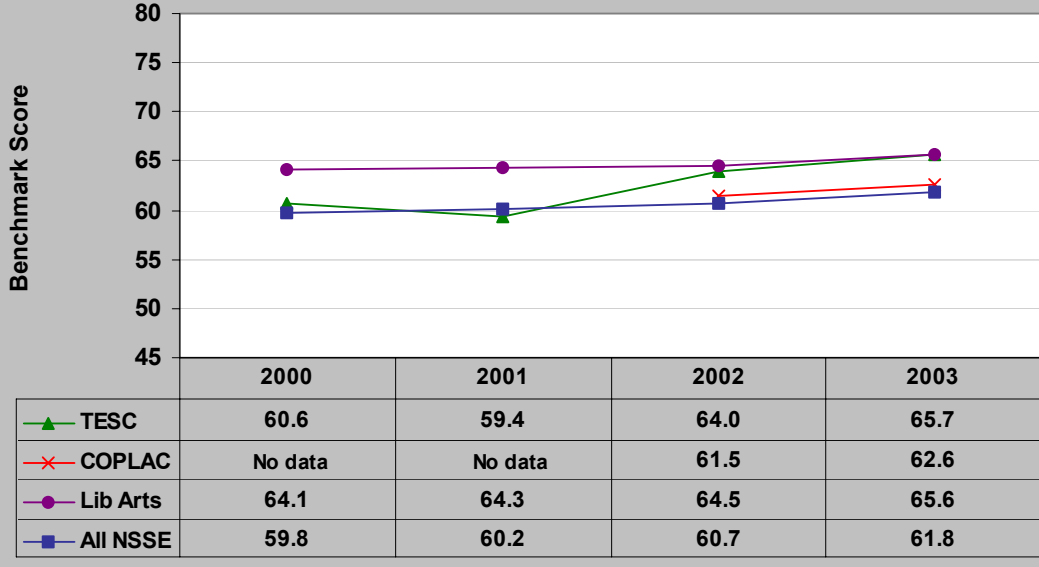


Means for Seniors

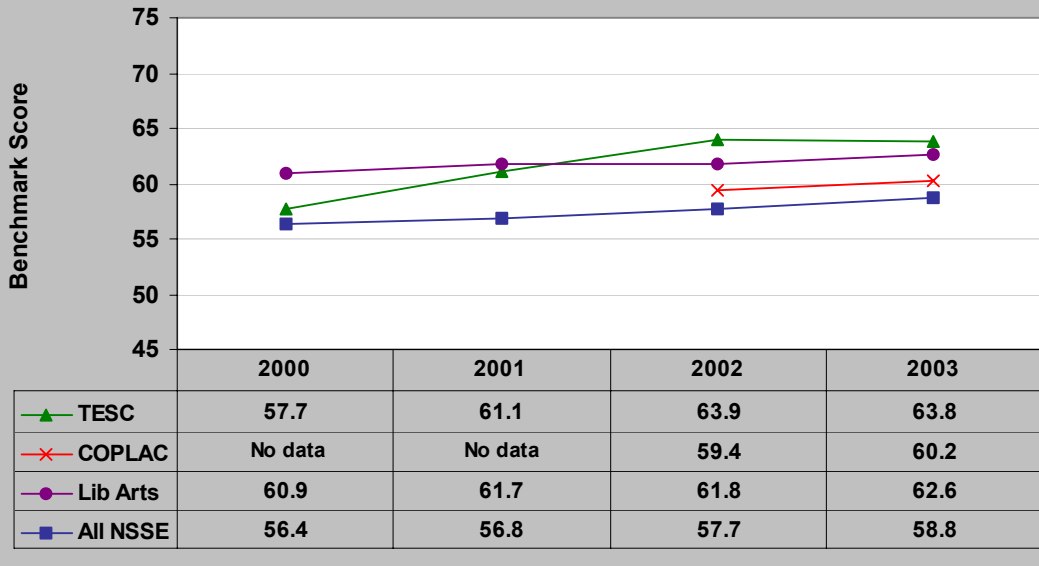
Supportive Campus Environment Benchmark Items	Evergreen	COPLAC	All Liberal Arts	All NSSE Schools
Quality of relationships with other students <i>(1=unfriendly, unsupportive, sense of alienation to 7=friendly, supportive, sense of belonging)</i>	5.66	5.84	5.83	5.80
Quality of relationships with faculty members <i>(1=unavailable, unhelpful, unsympathetic to 7=available, helpful, sympathetic)</i>	5.94	5.88	6.06	5.72
Quality of relationships with administrative personnel and offices <i>(1=unhelpful, inconsiderate, rigid to 7=helpful, considerate, flexible)</i>	5.32	4.80*	4.88*	4.80*
Campus environment provides the support you need to help you succeed academically 4-point scale: 1=Very little, 2=Some, 3=Quite a bit, 4=Very much	3.21	2.97*	3.19	2.95*
Campus environment helps you cope with your non-academic responsibilities (work, family, etc.) 4-point scale: 1=Very little, 2=Some, 3=Quite a bit, 4=Very much	2.13	1.85*	2.03	1.89*
Campus environment provides the support you need to thrive socially 4-point scale: 1=Very little, 2=Some, 3=Quite a bit, 4=Very much	2.24	2.12	2.22	2.09

* Item showed significant difference for Evergreen vs. this comparison group of schools at $p < .01$.

First-year: Supportive Campus Environment Benchmark 2000-2003



Seniors: Supportive Campus Environment Benchmark 2000-2003



Benchmark Percentile Scores Comparison

The percentile scores reflect the percent of institutions in each comparison group that had a benchmark score at or below Evergreen's benchmark score.

First-Year Students 2003 Comparison

NSSE Benchmark	Percentile compared to All NSSE Schools	Percentile compared to Baccalaureate-Liberal Arts
Level of Academic Challenge	80%	50%
Active and Collaborative Learning	90%	90%
Student Interactions with Faculty	80%	50%
Enriching Educational Experiences	90%	70%
Supportive Campus Environment	70%	50%

Senior Students 2003 Comparison

NSSE Benchmark	Percentile compared to All NSSE Schools	Percentile compared to Baccalaureate-Liberal Arts
Level of Academic Challenge	90%	70%
Active and Collaborative Learning	90%	90%
Student Interactions with Faculty	60%	20%
Enriching Educational Experiences	70%	20%
Supportive Campus Environment	80%	50%

Overall Satisfaction Items

First-year Students Overall Satisfaction Items	Evergreen	COPLAC	All Liberal Arts	All NSSE Schools
Overall, how would you evaluate the quality of academic advising you have received at your institution? <i>(1=poor, 2=fair, 3=good, 4=excellent)</i>	3.07	2.94	3.17	3.01
How would you evaluate your entire educational experience at this institution? <i>(1=poor, 2=fair, 3=good, 4=excellent)</i>	3.29	3.25	3.40	3.23
If you could start over again, would you go to the same institution you are now attending? <i>(1=definitely no, 2=probably no, 3=probably yes, 4=definitely yes)</i>	3.40	3.20	3.30	3.22

* Item showed significant difference for Evergreen vs. this comparison group of schools at $p < .01$.

Senior Students Overall Satisfaction Items	Evergreen	COPLAC	All Liberal Arts	All NSSE Schools
Overall, how would you evaluate the quality of academic advising you have received at your institution? <i>(1=poor, 2=fair, 3=good, 4=excellent)</i>	2.93	2.98	3.21*	2.93
How would you evaluate your entire educational experience at this institution? <i>(1=poor, 2=fair, 3=good, 4=excellent)</i>	3.58	3.28*	3.43*	3.24*
If you could start over again, would you go to the same institution you are now attending? <i>(1=definitely no, 2=probably no, 3=probably yes, 4=definitely yes)</i>	3.51	3.19*	3.25*	3.17*

* Item showed significant difference for Evergreen vs. this comparison group of schools at $p < .01$.