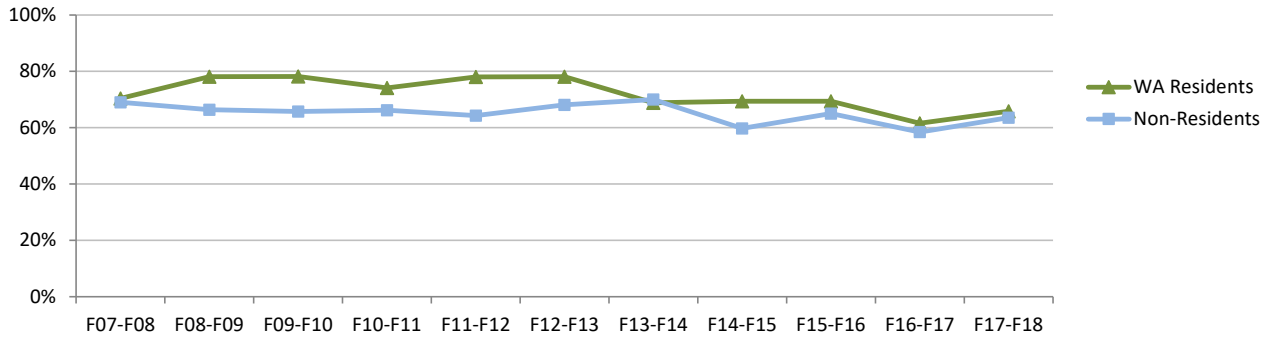


Fall-to-Fall Retention Rates for First-time, First-Year Students

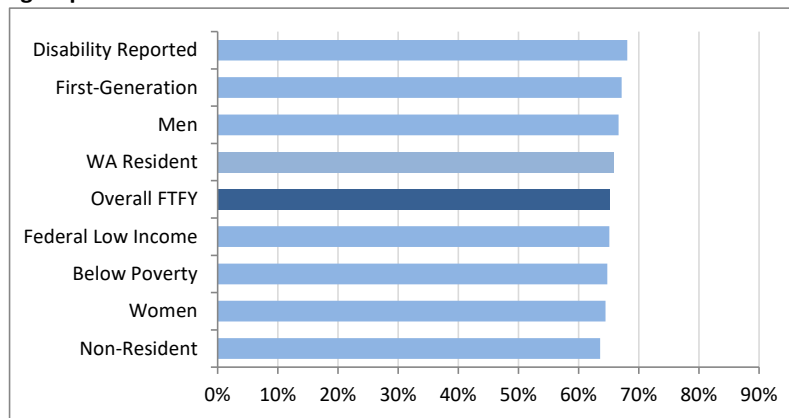
First-time, First-year Students are new students for whom Evergreen was their first college since high school completion. Number of students enrolled fall quarter who are enrolled the subsequent fall quarter.

Entering cohort fall qtr to 2nd fall qtr	Fall07-Fall08	Fall08-Fall09	Fall09-Fall10	Fall10-Fall11	Fall11-Fall12	Fall12-Fall13	Fall13-Fall14	Fall14-Fall15	Fall15-Fall16	Fall16-Fall17	Fall17-Fall18
All FTFY	70%	72%	73%	71%	72%	73%	69%	66%	68%	60%	65%
starting number (N)=	686	665	578	624	542	534	509	543	595	572	521
WA Residents	70%	78%	78%	74%	78%	78%	69%	69%	69%	62%	66%
starting number (N)=	392	338	330	355	287	283	289	327	366	341	381
Non-Residents	69%	66%	66%	66%	64%	68%	70%	60%	65%	58%	64%
starting number (N)=	294	327	248	269	255	251	220	216	229	231	140



FTFY Retention by Demographic Subgroups: Fall 2017 to Fall 2018

Disability Reported	68%
First-Generation	67%
Men	67%
WA Resident	66%
Overall FTFY	65%
Below Poverty	65%
Federal Low Income	65%
Women	64%
Non-Resident	64%

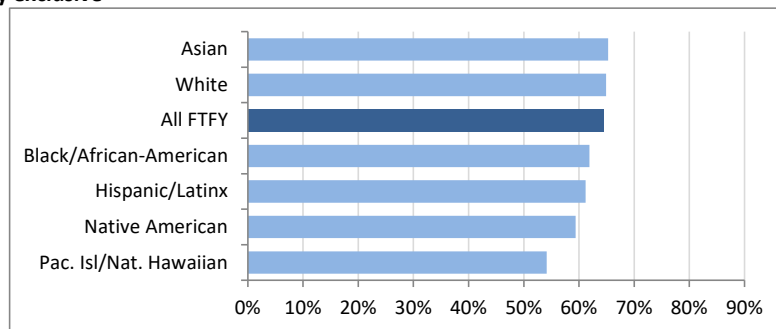


Three-year Weighted Average Fall-to-Fall Retention for FTFY by Race/Ethnicity

Combined cohorts Fall 15, Fall 16, Fall 17

Race/Ethnicity categories NOT mutually exclusive

Asian	65%
White	65%
All FTFY	65%
Black/African-American	62%
Hispanic/Latinx	61%
Native American	59%
Pac. Isl/Nat. Hawaiian	54%



3-yr weighted ave.	
first-gen	62%
disability	66%

Fall-to-Fall Retention: First-time, First-year Students

First-time, First-year Students are new students for whom Evergreen was their first college since high school completion. Number of students enrolled fall quarter who are enrolled the subsequent fall quarter

	F11-F12	F12-F13	F13-F14	F14-F15	F15-F16	F16-F17	F17-F18
First-time, First-year Students	72%	73%	69%	66%	68%	60%	65%
Students of Color	68%	81%	65%	65%	69%	57%	61%
White, Non-Hispanic	73%	71%	71%	66%	68%	61%	68%

Annual Race/Ethnicity detail categories below are NOT mutually exclusive.

Starting Headcount	Fall 11	Fall 12	Fall 13	Fall 14	Fall 15	Fall 16	Fall 17
Hispanic/Latinx	37	47	43	61	79	69	71
Black/African-American	41	40	36	41	50	54	43
Native American	18	22	22	32	37	30	34
Asian	33	32	30	38	50	46	25
White	436	425	394	411	495	467	428
Retained to 2nd Fall	to Fall 12	to Fall 13	to Fall 14	to Fall 15	to Fall 16	to Fall 17	to Fall 18
Hispanic/Latinx	25	35	30	42	54	33	47
Black/African-American	25	35	21	24	35	31	25
Native American	11	20	13	17	24	14	22
Asian	28	27	21	25	35	32	12
White	319	305	280	273	333	283	286
F-to-F Retention Rate	to Fall 12	to Fall 13	to Fall 14	to Fall 15	to Fall 16	to Fall 17	to Fall 18
Hispanic/Latinx	68%	74%	70%	69%	68%	48%	66%
Black/African-American	61%	88%	58%	59%	70%	57%	58%
Native American	61%	91%	59%	53%	65%	47%	65%
Asian	85%	84%	70%	66%	70%	70%	48%
White	73%	72%	71%	66%	67%	61%	67%

*annual detail for Pacific Islander/Native Hawaiian is not presented because number is too low.

F-to-F Retention Rate	to Fall 12	to Fall 13	to Fall 14	to Fall 15	to Fall 16	to Fall 17	to Fall 18
Federal Low Income	70%	73%	64%	66%	67%	58%	65%
Below Poverty	72%	76%	62%	68%	68%	59%	65%
WA Resident	78%	78%	69%	69%	69%	62%	66%
Non-Resident	64%	68%	70%	60%	65%	58%	64%
Women	74%	78%	72%	70%	70%	61%	64%
Men	69%	68%	66%	60%	65%	59%	67%
First-Generation	68%	72%	65%	71%	60%	59%	67%
Disability Reported	76%	61%	71%	48%	72%	58%	68%

3-yr weighted average retention

65% Asian
 65% White
65% All FTFY
 62% Black/African-American
 61% Hispanic/Latinx
 59% Native American
 54% Pac. Isl/Nat. Hawaiian

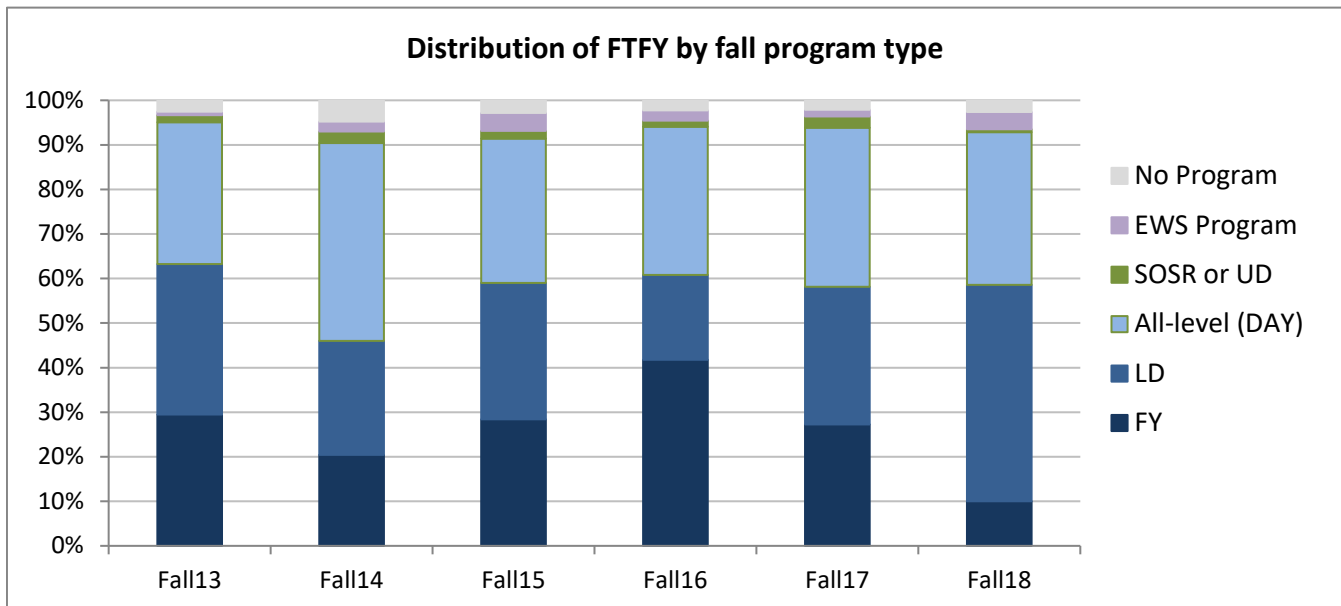
5-yr weighted average retention

67% Pac. Isl/Nat. Hawaiian
 66% White
 66% Asian
66% All FTFY
 64% Hispanic/Latinx
 61% Black/African-American
 58% Native American

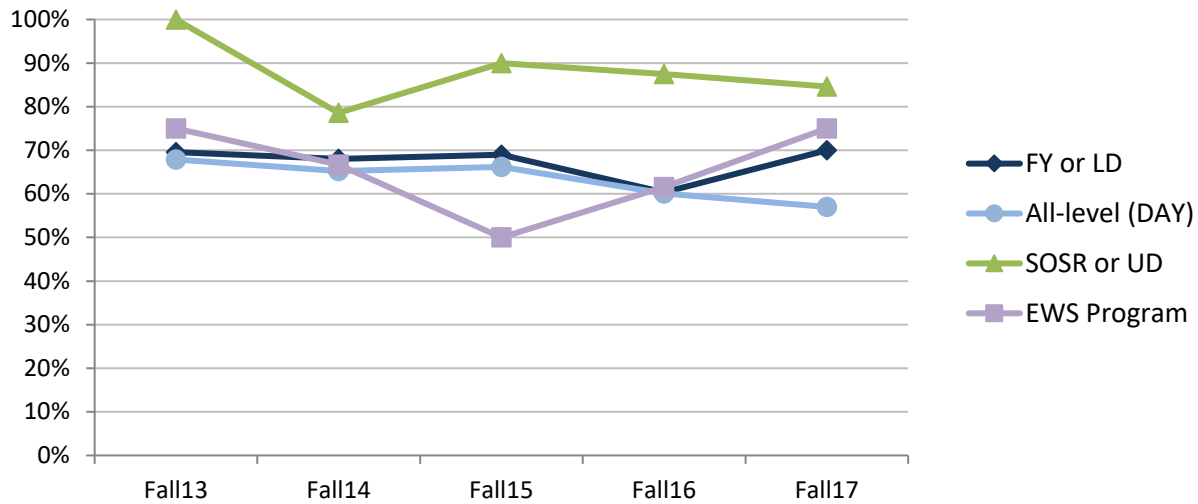
Distribution of FTFY by Fall Program Type

	Fall 13	Fall 14	Fall 15	Fall 16	Fall 17	Fall 18
Total FTFY	509	543	595	572	521	309
# in First-Year Program	150	111	169	239	142	31
# in Lower Division Program	172	139	182	109	161	150
Combined # in FY or LD	322	250	351	348	303	181
# in All-level Program (DAY)	162	241	193	190	186	106
# in SOSR or UD Program	8	14	10	8	13	2
# in EWS Program	4	12	24	13	8	12
# in No Program	13	26	17	13	11	8

% in First-Year Program	29%	20%	28%	42%	27%	10%
% in Lower Division Program	34%	26%	31%	19%	31%	49%
Combined % in FY or LD	63%	46%	59%	61%	58%	59%
% in All-level Program DAY	32%	44%	32%	33%	36%	34%
% in SOSR or UD Program	2%	3%	2%	1%	2%	1%
% in EWS Program	1%	2%	4%	2%	2%	4%
% in No Program	3%	5%	3%	2%	2%	3%



Retention of FTFY to subsequent fall based on starting fall program type



FTFY Fall-to-Fall Retention by Starting Program Type

	Fall13- Fall14	Fall14- Fall15	Fall15- Fall16	Fall16- Fall17	Fall16- Fall17
Total FTFY	509	543	595	572	521
First-Year Program					
starting N	150	111	169	239	142
returning N	111	75	120	142	97
% retained	74%	68%	71%	59%	68%
Lower Division Program					
starting N	172	139	182	109	161
returning N	113	95	122	68	114
% retained	66%	68%	67%	62%	71%
FY or LD Collapse					
starting N	322	250	351	348	303
returning N	224	170	242	210	211
% retained	70%	68%	69%	60%	70%
All-level Program (DAY)					
starting N	162	241	193	190	186
returning N	109	157	132	114	106
% retained	67%	65%	68%	60%	57%
SOSR or UD Program					
starting N	8	14	10	8	13
returning N	8	11	9	7	11
% retained	100%	79%	90%	88%	85%
EWS Program					
starting N	4	12	24	13	8
returning N	3	8	12	8	6
% retained	75%	67%	50%	62%	75%
No Program					
starting N	13	26	17	13	11
returning N	9	10	8	6	6
% retained	69%	38%	47%	46%	55%