

**Masters of Public Administration  
Demographics of Enrolled MPA Students Fall Quarters 2010 to 2021**

Fall Quarter*	2010	2011	2012	2013	2014	2015	2016	2017	2018	2019	2020	2021
<b>TOTAL STUDENT HEADCOUNT</b>	<b>152</b>	<b>137</b>	<b>156</b>	<b>153</b>	<b>177</b>	<b>165</b>	<b>150</b>	<b>145</b>	<b>144</b>	<b>142</b>	<b>120</b>	<b>131</b>
*Source: updated per PCHEES 10th day snapshots	30 TRIBAL	31 TRIBAL	29 TRIBAL	26 TRIBAL	34 TRIBAL	27 TRIBAL	31 TRIBAL	31 TRIBAL	27 TRIBAL	20 TRIBAL	14 TRIBAL	25 TRIBAL
	122 GENER	106 GENER	127 GENER	127 GENER	143 GENER	138 GENER	119 GENER	114 GENER	117 GENER	86 GENERAL	76 GENERAL	93 GENERAL
<b>Men</b>	51	50	56	50	55	54	48	42	44	39	35	44
<b>Women</b>	101	87	100	103	122	111	102	103	100	103	85	87
<b>% Women</b>	<b>66.4%</b>	<b>63.5%</b>	<b>64.1%</b>	<b>67.3%</b>	<b>68.9%</b>	<b>67.3%</b>	<b>68.0%</b>	<b>71.0%</b>	<b>69.4%</b>	<b>72.5%</b>	<b>70.8%</b>	<b>66.4%</b>
<b>Race Summary</b>												
<b>White, Non-Hispanic, Not Multi-racial</b>	87	79	98	94	105	95	88	76	81	79	63	74
<b>Students of Color</b>	60	55	55	56	69	62	53	62	62	62	54	54
<b>Not Indicated</b>	5	3	3	3	3	8	9	7	1	1	3	3
<b>% Students of Color</b>	<b>39.5%</b>	<b>40.1%</b>	<b>35.3%</b>	<b>36.6%</b>	<b>39.0%</b>	<b>37.6%</b>	<b>35.3%</b>	<b>42.8%</b>	<b>43.1%</b>	<b>43.7%</b>	<b>45.0%</b>	<b>41.2%</b>
<b>v2. Racial Ethnic Subcategories presented below are mutually exclusive. Students are rolled into a single category.</b>												
<b>Hispanic/Latino, of any race</b>	13	9	11	9	14	12	10	15	17	18	17	18
<b>Black, Non-hispanic</b>	13	8	7	9	13	15	6	10	14	15	13	11
<b>American Indian/Alaskan Native, Non-hispanic</b>	23	23	24	22	19	16	20	19	16	15	13	14
<b>Multiracial, Non-hispanic</b>	<5	5	<5	10	17	15	13	13	9	11	9	8
<b>White/Caucasian, Non-hispanic</b>	87	79	98	94	105	95	88	76	81	79	63	74
<b>Unknown</b>	5	3	3	3	3	8	9	7	1	1	3	3
<b>Asian, Non-hispanic</b>												2
<b>Pacific Islander/Native Hawaiian, Non-hispanic</b>	<i>Could not be presented due to low number of students</i>											1
<b>v3. Racial Ethnic Subcategories presented below are NOT mutually exclusive. Students can identify in more than one category.</b>												
<b>Hispanic/Latino</b>	13	9	11	9	14	12	10	15	17	18	17	18
<b>Black/African-American</b>	13	8	7	12	18	20	10	13	17	24	18	20
<b>American Indian/Alaskan Native</b>	25	25	27	31	33	27	28	28	26	25	20	21
<b>White/Caucasian</b>	91	86	104	107	131	116	103	92	95	93	75	87
<b>Asian</b>												4
<b>Pacific Islander/Native Hawaiian</b>	<i>Could not be presented due to low number of students</i>											2
<b>Average Age</b>	36	37	37	38	37	36	35	35	36	36	36	36
<b>Median Age</b>	33	34	34	34	34	33	33	33	35	35	34	35
<b>Washington Resident</b>	146	129	147	152	174	162	144	141	141	140	119	128
<b>Non-resident</b>	6	8	9	1	3	3	6	4	3	2	1	3
<b>% Washington Resident</b>	<b>96.1%</b>	<b>94.2%</b>	<b>94.2%</b>	<b>99.3%</b>	<b>98.3%</b>	<b>98.2%</b>	<b>96.0%</b>	<b>97.2%</b>	<b>97.9%</b>	<b>98.6%</b>	<b>99.2%</b>	<b>97.7%</b>
<b>Regular (degree-seeking)</b>	140	135	145	150	170	158	143	142	133	138	119	125
<b>Special (non-matriculated)</b>	12	2	11	3	7	7	7	3	11	4	1	6
<b>Below Federal Poverty Level</b>	36	36	57	62	74	64	65	60	39	41	29	tba
	<b>23.7%</b>	<b>26.3%</b>	<b>36.5%</b>	<b>40.5%</b>	<b>41.8%</b>	<b>38.8%</b>	<b>43.3%</b>	<b>41.4%</b>	<b>27.1%</b>	<b>28.9%</b>	<b>24.2%</b>	<b>#VALUE!</b>
<b>Low Income (≤ 150% of federal poverty level)</b>	48	54	72	82	90	80	81	77	53	54	34	tba
	<b>31.6%</b>	<b>39.4%</b>	<b>46.2%</b>	<b>53.6%</b>	<b>50.8%</b>	<b>48.5%</b>	<b>54.0%</b>	<b>53.1%</b>	<b>36.8%</b>	<b>38.0%</b>	<b>28.3%</b>	<b>#VALUE!</b>
<b>First Generation baccalureate (per FAFSA or application)</b>	37	43	42	41	40	50	61	54	36	35	31	43
	<b>24.3%</b>	<b>31.4%</b>	<b>26.9%</b>	<b>26.8%</b>	<b>22.6%</b>	<b>30.3%</b>	<b>40.7%</b>	<b>37.2%</b>	<b>25.0%</b>	<b>24.6%</b>	<b>25.8%</b>	<b>32.8%</b>
<b>Disability (reported)</b>	2	3	4	4	9	8	8	10	9	7	8	11
	<b>1.3%</b>	<b>2.2%</b>	<b>2.6%</b>	<b>2.6%</b>	<b>5.1%</b>	<b>4.8%</b>	<b>5.3%</b>	<b>6.9%</b>	<b>6.3%</b>	<b>4.9%</b>	<b>6.7%</b>	<b>8.4%</b>
<b>Veterans</b>	10	12	11	12	17	18	13	8	5	9	5	10
	<b>6.6%</b>	<b>8.8%</b>	<b>7.1%</b>	<b>7.8%</b>	<b>9.6%</b>	<b>10.9%</b>	<b>8.7%</b>	<b>5.5%</b>	<b>3.5%</b>	<b>6.3%</b>	<b>4.2%</b>	<b>7.6%</b>

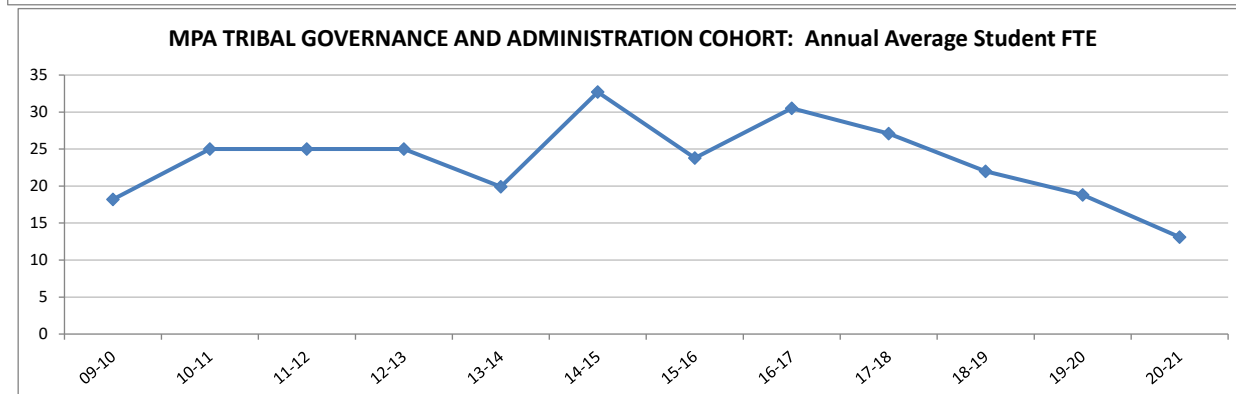
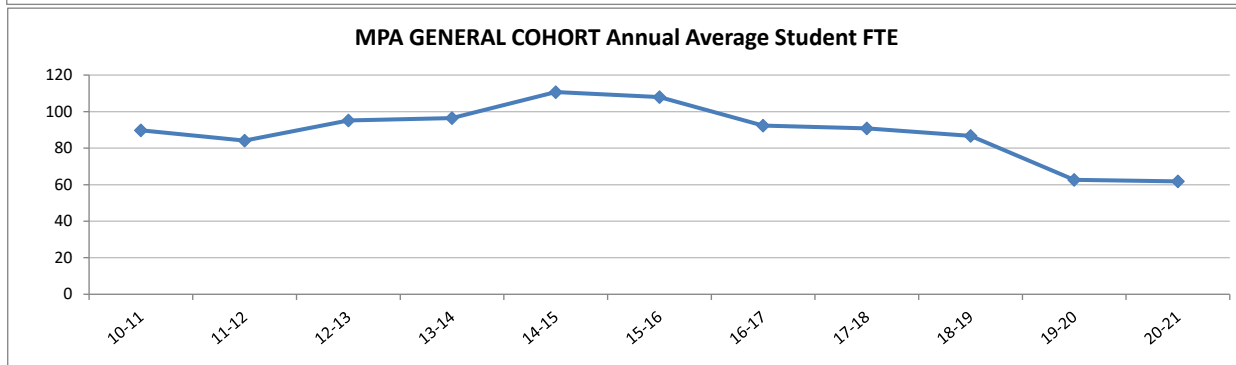
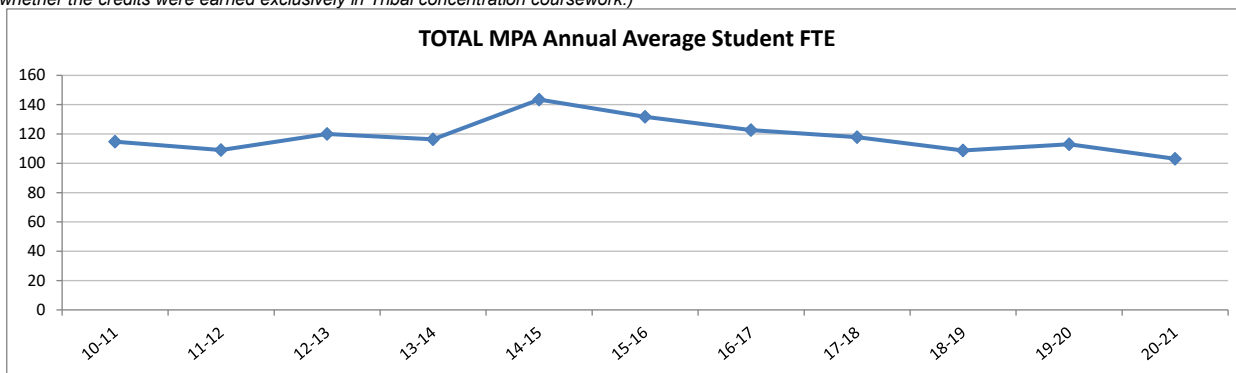
**Student FTE History**

predicted

<b>MPA-TOTAL Annual Average FTE* History</b>	10-11	11-12	12-13	13-14	14-15	15-16	16-17	17-18	18-19	19-20	20-21	21-22
Actual Annual Average FTE	114.8	109.1	120.1	116.4	143.5	131.7	122.7	117.9	108.7	112.5	101.3	106.3
Target Annual Average FTE	105.0	105.0	105.0	105.0	111.0	111.0	111.0	111.0	111.0	130.0	130.0	130.0
difference: actual FTE - target FTE	9.8	4.1	15.1	11.4	32.5	20.7	11.7	6.9	-2.3	-17.5	-28.7	-23.7
<b>MPA-General: Annual Average FTE* History</b>	10-11	11-12	12-13	13-14	14-15	15-16	16-17	17-18	18-19	19-20	20-21	20-21
Actual Annual Average FTE	89.8	84.1	95.1	96.5	110.7	107.9	92.3	90.8	86.7	62.7	60.9	72.7
Target Annual Average FTE	85.0	85.0	85.0	85.0	88.5	88.5	88.5	88.5	88.5	78.0	78.0	78.0
difference: actual FTE - target FTE	4.8	-0.9	10.1	11.5	22.2	19.4	3.8	2.3	-1.8	-15.3	-17.1	-5.3
<b>MPA-Tribal Cohort**: Annual Average FTE* History</b>	10-11	11-12	12-13	13-14	14-15	15-16	16-17	17-18	18-19	19-20	20-21	20-21
Actual Annual Average FTE	25.0	25.0	25.0	19.9	32.7	23.8	30.5	27.1	22.0	16.4	13.5	12.9
Target Annual Average FTE	20.0	20.0	20.0	20.0	22.5	22.5	22.5	22.5	22.5	26.0	26.0	26.0
difference: actual FTE - target FTE	5.0	5.0	5.0	-0.1	10.2	1.3	8.0	4.6	-0.5	-9.6	-12.5	-13.1
<b>MPA-Tacoma*: Annual Average FTE* History</b>	10-11	11-12	12-13	13-14	14-15	15-16	16-17	17-18	18-19	19-20	20-21	20-21
Actual Annual Average FTE										31.1	27.0	20.8
Target Annual Average FTE										26.0	26.0	26.0
difference: actual FTE - target FTE										5.1	1.0	

\*Annual Average FTE includes only state-support FTE (state employee waivers excluded)

\*\*MPA-Tribal cohort includes all credits taken by matriculated MPA-Tribal cohort students (regardless of whether the credits were earned exclusively in Tribal concentration coursework.)



## Masters of Public Administration Retention and Graduation

### TOTAL MPA Degrees Awarded

Academic Year	08-09	09-10	10-11	11-12	12-13	13-14	14-15	15-16	16-17	17-18	18-19	19-20	20-21
Total # of MPA Degrees Awarded*	34	61	50	59	45	59	51	90	50	62	49	54	1
subset of above that were awarded to Tribal concentration	1	12	2	19	2	16	0	26	1	21	3	19	0

\*Number of MPA degrees awarded fall through summer of each academic year, updated as of 3/8/21.

**1444 Grand Total MPA Degrees Awarded 1981-2020**

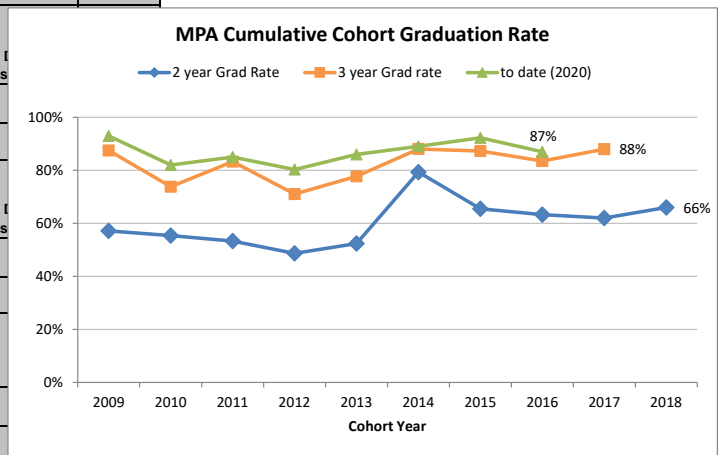
**169 Grand Total MPA to Tribal Governance and Administration concentration 2004-2020**

### Admission, Retention, and Graduation of Entering Student Cohorts Fall 2009-Fall 2020

For older cohort graduation rates, see the final page of this pdf.

Fall Quarter	2009	2010	2011	2012	2013	2014	2015	2016	2017	2018	2019	2020
# of New Degree-seeking MPA Students	56	65	60	76	63	92	55	79	50	65	73	55
	46 OLY 19 TMP		59 OLY 17 TMP		63 OLY 29 TMP		48 OLY 31 TMP		45 OLY 20 TMP		39 OLY 34 TAC 42 OLY 13 TMP	
Fall-to-Fall Retention	F09-10	F10-11	F11-F12	F12-F13	F13-F14	F14-F15	F15-F16	F16-F17	F17-F18	F18-19	F19-20	F20-21
# of New MPA retained to 2nd fall qtr	51	55	55	63	53	83	53	75	44	54	60	48
Retention rate to 2nd fall quarter	91.1%	84.6%	91.7%	82.9%	84.1%	90.2%	96.4%	94.9%	88.0%	83.1%	82.2%	87.3%
	84.2% TRI 84.8% GEN		70.6% TRI 86.4% GEN		82.8% TRI 93.7% GEN							
Graduation Rate for New MPA Admits	Degree by summer 11	Degree by summer 12	Degree by summer 13	Degree by summer 14	Degree by summer 15	Degree by summer 16	Degree by summer 17	Degree by summer 18	Degree by summer 19	Degree by summer 20	Degree by summer 21	Degree by summer 22
# of New MPA who earned degree within 2 years	32	36	32	37	33	73	36	50	31	43		
Graduation rate within 2 years	57.1%	55.4%	53.3%	48.7%	52.4%	79.3%	65.5%	63.3%	62.0%	66.2%		
	Degree by summer 12	Degree by summer 13	Degree by summer 14	Degree by summer 15	Degree by summer 16	Degree by summer 17	Degree by summer 18	Degree by summer 19	Degree by summer 20	Degree by summer 21	Degree by summer 22	Degree by summer 23
# of New MPA who earned degree within 3 years	49	48	50	54	49	81	48	66	44			
Graduation rate within 3 years (cumulative)	87.5%	73.8%	83.3%	71.1%	77.8%	88.0%	87.3%	83.5%	88.0%			
	Degree by summer 13	Degree by summer 14	Degree by summer 15	Degree by summer 16	Degree by summer 17	Degree by summer 18	Degree by summer 19	Degree by summer 20	Degree by summer 21	Degree by summer 22	Degree by summer 23	Degree by summer 24
# of New MPA who earned degree within 4 years	51	52	50	57	53	81	51	69				
Graduation rate within 4 years (cumulative)	91.1%	80.0%	83.3%	75.0%	84.1%	88.0%	92.7%	87.3%				
	Degree by summer 20	Degree by summer 20	Degree by summer 20	Degree by summer 20	Degree by summer 20	Degree by summer 20	Degree by summer 20	Degree by summer 20	Degree by summer 20	Degree by summer 20	Degree by summer 20	Degree by summer 20
# of New MPA who earned degrees to date*	52	53	51	61	54	82	51	69				
Total Graduation rate (cumulative)	92.9%	81.5%	85.0%	80.3%	85.7%	89.1%	92.7%	87.3%				

\*Retention and Graduation data (AW only) updated as of 12/11/19



Last updated March 2021

(Subset) MPA Tribal Concentration Cohort Graduation Rates

Fall Quarter	2004	2006	2008	2010	2012	2014	2016	2018	2020
# of New Degree-seeking MPA Students	20	19	18	19	17	29	31	20	13
Fall-to-Fall Retention	F04-F05	F06-F07	F08-F09	F10-F11	F12-F13	F14-F15	F16-F17	F18-19	F20-21
# of New MPA retained to 2nd fall qtr	17	16	14	16	12	24	28	16	
Retention rate to 2nd fall quarter	85.0%	84.2%	77.8%	84.2%	70.6%	82.8%	90.3%	80.0%	

Graduation Rate for New MPA Admits	Degree by summer 06	Degree by summer 08	Degree by summer 10	Degree by summer 12	Degree by summer 14	Degree by summer 16	Degree by summer 18	Degree by summer 20	Degree by summer 22
# of New MPA who earned degree within 2 years	15	13	10	12	10	23	20	15	
Graduation rate within 2 years	75.0%	68.4%	55.6%	63.2%	58.8%	79.3%	64.5%	75.0%	
	Degree by summer 07	Degree by summer 09	Degree by summer 11	Degree by summer 13	Degree by summer 15	Degree by summer 17	Degree by summer 19	Degree by summer 21	Degree by summer 23
# of New MPA who earned degree within 3 years	17	14	12	14	10	23	23		
Graduation rate within 3 years (cumulative)	85.0%	73.7%	66.7%	73.7%	58.8%	79.3%	74.2%		
	Degree by summer 08	Degree by summer 10	Degree by summer 12	Degree by summer 14	Degree by summer 16	Degree by summer 18	Degree by summer 20	Degree by summer 22	Degree by summer 24
# of New MPA who earned degree within 4 years	17	15	13	15	10	23	25		
Graduation rate within 4 years (cumulative)	85.0%	78.9%	72.2%	78.9%	58.8%	79.3%	80.6%		
# of New MPA who earned degrees to date*	17	15	13	15	11	23			
Total Graduation rate (cumulative)	85.0%	78.9%	72.2%	78.9%	64.7%	79.3%			

(Subset) MPA General Cohort Graduation Rates (for comparison)

Fall Quarter	2004	2006	2008	2010	2012	2014	2016	2018	2020
# of New Degree-seeking MPA Students	39	37	55	46	59	63	48	45	42
Fall-to-Fall Retention	F04-F05	F06-F07	F08-F09	F10-F11	F12-F13	F14-F15	F16-F17	F18-19	F20-21
# of New MPA retained to 2nd fall qtr	37	31	49	39	51	59	47	38	
Retention rate to 2nd fall quarter	94.9%	83.8%	89.1%	84.8%	86.4%	93.7%	97.9%	84.4%	

Graduation Rate for New MPA Admits	Degree by summer 06	Degree by summer 08	Degree by summer 10	Degree by summer 12	Degree by summer 14	Degree by summer 16	Degree by summer 18	Degree by summer 20	Degree by summer 20
# of New MPA who earned degree within 2 years	21	22	36	25	27	51	30	28	
Graduation rate within 2 years	53.8%	59.5%	65.5%	54.3%	45.8%	81.0%	62.5%	62.2%	
	Degree by summer 07	Degree by summer 09	Degree by summer 11	Degree by summer 13	Degree by summer 15	Degree by summer 17	Degree by summer 19	Degree by summer 21	Degree by summer 21
# of New MPA who earned degree within 3 years	32	29	46	35	44	58	43		
Graduation rate within 3 years (cumulative)	82.1%	78.4%	83.6%	76.1%	74.6%	92.1%	89.6%		
	Degree by summer 08	Degree by summer 10	Degree by summer 12	Degree by summer 14	Degree by summer 16	Degree by summer 18	Degree by summer 20	Degree by summer 22	Degree by summer 22
# of New MPA who earned degree within 4 years	34	31	47	38	50	58	45		
Graduation rate within 4 years (cumulative)	87.2%	83.8%	85.5%	82.6%	84.7%	92.1%	93.8%		
# of New MPA who earned degrees to date*	35	33	47	39	51	59			
Total Graduation rate (cumulative)	89.7%	89.2%	85.5%	84.8%	86.4%	93.7%			

MPA TOTAL graduate program admissions	Total Applications	Fall 2012	Fall 2013	Fall 2014	Fall 2015	Fall 2016	Fall 2017	Fall 2018	Fall 2019	Fall 2020	Fall 2021
# applicati		127	112	148	128	165	125	99	117	88	105

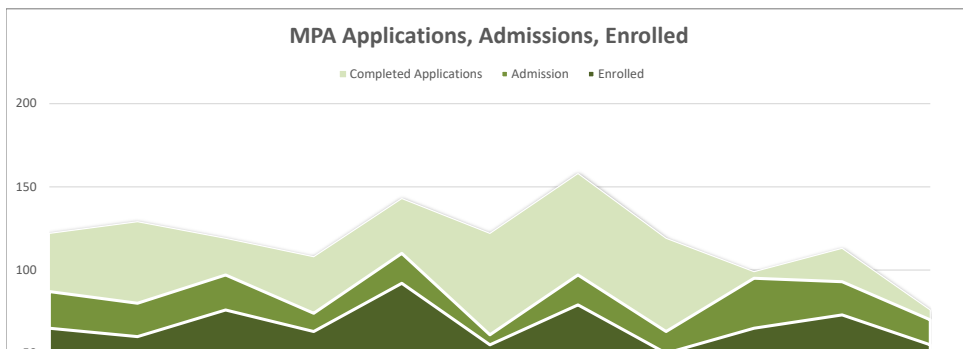
Completed Applications	Fall 2010	Fall 2011	Fall 2012	Fall 2013	Fall 2014	Fall 2015	Fall 2016	Fall 2017	Fall 2018	Fall 2019	Fall 2020	Fall 2021	5-year weighted average 2017-21
# completed applications	122	129	119	108	143	122	158	119	95	113	76	97	Average appl. completion
% applications completed			93.7%	96.4%	96.6%	95.3%	95.8%	95.2%	96.0%	96.6%	86.4%	92.4%	93.6%
# completed applications from students of color*	50	35	43	39	64	27	64	40	44	49	41	36	
# completed applications from WA residents	110	115	106	101	126	111	142	115	92	109	71	90	
# completed applications from non-residents**	7	8	7	4	8	9	14	4	3	2	3	7	
# completed applications from contested residency	5	6	6	3	9	2	2	0	0	2	2	0	

Admission	Fall 2010	Fall 2011	Fall 2012	Fall 2013	Fall 2014	Fall 2015	Fall 2016	Fall 2017	Fall 2018	Fall 2019	Fall 2020	Fall 2021	5-year weighted average 2017-21
Total # offered admission	87	80	97	74	110	61	97	63	90	93	70	94	Average acceptance
% admitted	71.3%	62.0%	81.5%	68.5%	76.9%	50.0%	61.4%	52.9%	94.7%	82.3%	92.1%	96.9%	82.0%
# students of color offered admission	40	20	35	26	51	15	44	22	43	38	39	35	
% SOC admitted	80.0%	57.1%	81.4%	66.7%	79.7%	55.6%	68.8%	55.0%	97.7%	77.6%	95.1%	97.2%	
# WA residents offered admission	79	69	87	69	99	55	88	61	88	91	66	87	
% WA resident admitted	71.8%	60.0%	82.1%	68.3%	78.6%	49.5%	62.0%	53.0%	95.7%	83.5%	93.0%	96.7%	
# non-residents offered admission	5	7	4	2	6	4	7	2	2	1	2	7	
% non-resident admitted	71.4%	87.5%	57.1%	50.0%	75.0%	44.4%	50.0%	50.0%	66.7%	50.0%	66.7%	100.0%	
# contested res offered admission	3	4	6	3	5	2	2	0	0	1	2	0	
% contested residents admitted	60.0%	66.7%	100.0%	100.0%	55.6%	100.0%	100.0%			50.0%	100.0%	#DIV/0!	

Enrolled	Fall 2010	Fall 2011	Fall 2012	Fall 2013	Fall 2014	Fall 2015	Fall 2016	Fall 2017	Fall 2018	Fall 2019	Fall 2020	Fall 2021	5-year weighted average yield (% enrolled of those offered admission)
Total New MPA # enrolled	65	60	76	63	92	55	79	50	65	73	55	69	Average yield rate
yield from admission	74.7%	75.0%	78.4%	85.1%	83.6%	90.2%	81.4%	79.4%	72.2%	78.5%	78.6%	73.4%	76.1%
# students of color enrolled	34	17	29	23	44	13	36	19	34	28	29	23	SOC average yield
SOC yield from admission	85.0%	85.0%	82.9%	88.5%	86.3%	86.7%	81.8%	86.4%	79.1%	73.7%	74.4%	65.7%	75.1%
# WA residents enrolled	60	55	69	60	86	50	74	50	64	72	54	68	WA-Res average yield
WA resident yield from admission	75.9%	79.7%	79.3%	87.0%	86.9%	90.9%	84.1%	82.0%	72.7%	79.1%	81.8%	78.2%	78.4%
# non-residents enrolled	3	5	2	0	2	3	4	1	1	1	1	1	Non-Res average yield
non-resident yield from admission	60.0%	71.4%	50.0%	0.0%	33.3%	75.0%	57.1%	50.0%	50.0%	100.0%	50.0%	14.3%	35.7%
# contested res enrolled	2	0	5	3	4	2	1	0	0	0	0	0	Contested-res ave. yield
contested res yield from admission	66.7%	0.0%	83.3%	100.0%	80.0%	100.0%	50.0%						0.0%
# regular admission	18	28	8	26	28	36	30	17	22	12	21	58	
# provisional admission	18	0	11	1	1	0	0	0	0	2	5	0	
# conditional admission	29	32	57	36	63	19	49	33	43	59	29	11	
% conditional/provisional	72.3%	53.3%	89.5%	58.7%	69.6%	34.5%	62.0%	66.0%	66.2%	83.6%	61.8%	15.9%	
# Evergreen graduates	33	22	40	35	47	22	28	19	27	31	31	41	
% Evergreen graduates	50.8%	36.7%	52.6%	55.6%	51.1%	40.0%	35.4%	38.0%	41.5%	42.5%	56.4%	59.4%	

TMP New Cohort	Fall 2010	Fall 2011	Fall 2012	Fall 2013	Fall 2014	Fall 2015	Fall 2016	Fall 2017	Fall 2018	Fall 2019	Fall 2020	Fall 2021
	19		17		29		31		27		13	

\*Students of Color in this presentation include African-American, Asian, Pacific Islander, Native American/Alaskan Native, Hispanic/Latino, and Multiracial students.  
 \*\*Non-residents include non-residents and international applicants.



TOTAL MPA admissions hx

General Cohort MPA subset (includes all MPA applicants during fall quarter 2002 and all odd-)	Total Applications # applications (incl. incomplete)	Fall 2012	Fall 2013	Fall 2014	Fall 2015	Fall 2016	Fall 2017	Fall 2018	Fall 2020
		104	112	115	128	129	125	73	69

Completed Applications	Fall 2009	Fall 2010	Fall 2011	Fall 2012	Fall 2013	Fall 2014	Fall 2015	Fall 2016	Fall 2017	Fall 2018	Fall 2020	5-year weighted average 2016-20
# completed applications	107	93	129	97	108	110	122	123	119	70	60	Average appl. completion
% applications completed				93.3%	96.4%	95.7%	95.3%	95.3%	95.2%	95.9%	87.0%	94.3%
# completed applications from students of color*	28	28	35	25	39	38	27	37	40	19	26	
# completed applications from WA residents	96	84	115	86	101	96	111	111	115	68	58	
# completed applications from non-residents**	5	5	8	6	4	7	9	10	4	2	2	
# completed applications from contested residency	6	4	6	5	3	7	2	2	0	0	2	

Admission	Fall 2009	Fall 2010	Fall 2011	Fall 2012	Fall 2013	Fall 2014	Fall 2015	Fall 2016	Fall 2017	Fall 2018	Fall 2020	5-year weighted average 2016-20
# offered admission	71	61	80	77	74	78	61	64	63	65	55	Average acceptance
% admitted	66.4%	65.6%	62.0%	79.4%	68.5%	70.9%	50.0%	52.0%	52.9%	92.9%	91.7%	62.3%
# students of color offered admission	20	19	20	19	26	26	15	17	22	18	25	
% SOC admitted	71.4%	67.9%	57.1%	76.0%	66.7%	68.4%	55.6%	45.9%	55.0%	94.7%	96.2%	
# WA residents offered admission	61	56	69	69	69	70	55	58	61	64	52	
% WA resident admitted	63.5%	66.7%	60.0%	80.2%	68.3%	72.9%	49.5%	52.3%	53.0%	94.1%	89.7%	
# non-residents offered admission	4	3	7	3	2	5	4	4	2	1	1	
% non-resident admitted	80.0%	60.0%	87.5%	50.0%	50.0%	71.4%	44.4%	40.0%	50.0%	50.0%	50.0%	
# contested res offered admission	6	2	4	5	3	3	2	2	0	0	2	
% contested residents admitted	100.0%	50.0%	66.7%	100.0%	100.0%	42.9%	100.0%	100.0%			100.0%	

Enrolled	Fall 2009	Fall 2010	Fall 2011	Fall 2012	Fall 2013	Fall 2014	Fall 2015	Fall 2016	Fall 2017	Fall 2018	Fall 2020	5-year weighted average yield (% enrolled of those offered admission)
# enrolled	56	46	60	59	63	63	55	48	50	45	42	Average yield rate
yield from admission	78.9%	75.4%	75.0%	76.6%	85.1%	80.8%	90.2%	75.0%	79.4%	69.2%	76.4%	77.9%
# students of color enrolled	15	16	17	16	23	22	13	11	19	14	16	
SOC yield from admission	75.0%	84.2%	85.0%	84.2%	88.5%	84.6%	86.7%	64.7%	86.4%	77.8%	64.0%	
# WA residents enrolled	49	42	55	54	60	60	50	46	50	45	41	
WA resident yield from admission	80.3%	75.0%	79.7%	78.3%	87.0%	85.7%	90.9%	79.3%	82.0%	70.3%	78.8%	
# non-residents enrolled	2	2	5	1	0	1	3	1	1	0	1	
non-resident yield from admission	50.0%	66.7%	71.4%	33.3%	0.0%	20.0%	75.0%	25.0%	50.0%	0.0%	100.0%	
# contested res enrolled	5	2	0	4	3	2	2	1	0	0	0	
contested res yield from admission	83.3%	100.0%	0.0%	80.0%	100.0%	66.7%	100.0%	50.0%				
# regular admission	19	14	11	6	26	22	36	16	17	9	9	
# provisional admission	10	11	14	8	1	0	0	0	0	0	3	
# conditional admission	27	21	35	45	36	41	19	32	33	36	16	
% conditional/provisional	66.1%	69.6%	81.7%	89.8%	58.7%	65.1%	34.5%	66.7%	66.0%	80.0%	45.2%	
# Evergreen graduates	23	22	22	27	35	30	22	19	19	19	21	
% Evergreen graduates	41.1%	47.8%	36.7%	45.8%	55.6%	47.6%	40.0%	39.6%	38.0%	42.2%	50.0%	

\*Students of Color in this presentation include African-American, Asian, Pacific Islander, Native American/Alaskan Native, Hispanic/Latino, and Multiracial students.

In fall 2013, began using conditional ind from PCHEES which captures substantially fewer who are ultimately conditional by 10th day than admission file did.  
GENERAL MPA subset admission

**Masters of Public Administration  
Historical Demographics of Enrolled MPA Students Fall Quarters 1998 to 2009**

Fall Quarter*	1998	1999	2000	2001	2002**	2003	2004***	2005	2006	2007	2008	2009
<b>TOTAL STUDENT HEADCOUNT</b>	<b>74</b>	<b>74</b>	<b>66</b>	<b>62</b>	<b>101</b>	<b>104</b>	<b>119</b>	<b>126</b>	<b>133</b>	<b>140</b>	<b>139</b>	<b>148</b>
<i>*Source: updated per PCHEES 10th day snapshots</i>					13 TRIBAL		20 TRIBAL	20 TRIBAL	24 TRIBAL	27 TRIBAL	23 TRIBAL	26 TRIBAL
<i>**1st MPA Tribal cohort admitted Winter03, and new curriculum format begins for 1st year cohort.</i>					91 GENERAL		99 GENERAL	106 GENERAL	109 GENERAL	113 GENERAL	116 GENERAL	122 GENERAL
<i>***2nd MPA Tribal cohort admitted, which is the first "high-demand" cohort; high demand funds only provided separately for one year, then rolled into base in 2005.</i>												
<b>Male</b>	28	31	32	31	35	36	41	47	45	43	45	41
<b>Female</b>	46	43	34	31	66	68	78	79	88	97	94	107
<b>% Female</b>	62.2%	58.1%	51.5%	50.0%	65.3%	65.4%	65.5%	62.7%	66.2%	69.3%	67.6%	72.3%
<b>African-American</b>	4	6	5	3	4	7	8	9	7	11	11	9
<b>Asian/Pacific Islander</b>	0	2	2	2	7	5	5	6	6	6		
<b>Asian</b>											5	4
<b>Pacific Islander</b>											0	1
<b>Native American/Alaskan Native</b>	4	2	4	1	17	17	18	16	23	22	22	24
<b>Hispanic/Latino</b>	5	7	6	2	5	2	3	5	3	4	7	8
<b>White</b>	53	49	44	50	63	63	73	82	85	84	84	93
<b>Not Indicated/Other</b>	8	8	5	4	5	10	12	8	9	13	10	9
<b>SUBTOTAL STUDENTS OF COLOR</b>	<b>13</b>	<b>17</b>	<b>17</b>	<b>8</b>	<b>33</b>	<b>31</b>	<b>34</b>	<b>36</b>	<b>39</b>	<b>43</b>	<b>45</b>	<b>46</b>
<b>% Students of Color</b>	17.6%	23.0%	25.8%	12.9%	32.7%	29.8%	28.6%	28.6%	29.3%	30.7%	32.4%	31.1%
<b>Average Age</b>	39	39	38	38	38	38	37	36	36	37	36	37
<b>Median Age</b>					36.5	38	37	34	34	34	34	35
<b>Washington Resident</b>	70	70	61	59	97	100	116	121	129	137	134	142
<b>Non-resident</b>	4	4	5	3	4	4	3	5	4	3	5	6
<b>% Washington Resident</b>	94.6%	94.6%	92.4%	95.2%	96.0%	96.2%	97.5%	96.0%	97.0%	97.9%	96.4%	95.9%
<b>Regular (degree-seeking)</b>	72	71	61	60	84	88	109	120	118	122	131	139
<b>Special (non-matriculated)</b>	2	3	5	2	17	16	10	6	15	18	8	9
<b>Below Federal Poverty Level</b>					24	28	30	32	29	45	42	39
					23.8%	26.9%	25.2%	25.4%	21.8%	32.1%	30.2%	26.4%
<b>Low Income (≤ 150% of federal poverty level)</b>												
<b>First Generation baccalureate (per FAFSA or application)</b>					19	22	26	28	30	38	29	34
					18.8%	21.2%	21.8%	22.2%	22.6%	27.1%	20.9%	23.0%
<b>Disability (reported)</b>					3	6	10	10	7	5	7	7
					3.0%	5.8%	8.4%	7.9%	5.3%	3.6%	5.0%	4.7%
<b>Veterans</b>					5	4	2	2	2	2	2	1
					5.0%	3.8%	1.7%	1.6%	1.5%	1.4%	1.4%	0.7%

<b>MPA-TOTAL Annual Average FTE* History</b>	<b>98-99</b>	<b>99-00</b>	<b>00-01</b>	<b>01-02</b>	<b>02-03</b>	<b>03-04</b>	<b>04-05</b>	<b>05-06</b>	<b>06-07**</b>	<b>07-08</b>	<b>08-09****</b>	<b>09-10</b>
<b>Actual Annual Average FTE</b>	<b>59.1</b>	<b>56.9</b>	<b>46.5</b>	<b>48.7</b>	<b>66.9</b>	<b>62.4</b>	<b>68.3</b>	<b>86.1</b>	<b>93.5</b>	<b>87.0</b>	<b>103.9</b>	<b>112.2</b>
<b>Target Annual Average FTE</b>	55.0	55.0	55.0	55.0	80.0	80.0	80.0	80.0	80.0	80.0	96.0	96.0
<i>difference: actual FTE - target FTE</i>	<i>4.1</i>	<i>1.9</i>	<i>-8.5</i>	<i>-6.3</i>	<i>-13.1</i>	<i>-17.6</i>	<i>-11.7</i>	<i>6.1</i>	<i>13.5</i>	<i>7.0</i>	<i>7.9</i>	<i>16.2</i>
<b>MPA-General: Annual Average FTE* History</b>	<b>98-99</b>	<b>99-00</b>	<b>00-01</b>	<b>01-02</b>	<b>02-03</b>	<b>03-04</b>	<b>04-05</b>	<b>05-06</b>	<b>06-07**</b>	<b>07-08</b>	<b>08-09</b>	<b>09-10</b>
<b>Actual Annual Average FTE</b>	<b>59.1</b>	<b>56.9</b>	<b>46.5</b>	<b>48.7</b>	<b>59.9</b>	<b>51.3</b>	<b>52.4</b>	<b>69.8</b>	<b>72.2</b>	<b>65.5</b>	<b>85.2</b>	<b>94.1</b>
<b>Target Annual Average FTE</b>	55.0	55.0	55.0	55.0	55.0	55.0	55.0	55.0	55.0	55.0	74.0	74.0
<i>difference: actual FTE - target FTE</i>	<i>4.1</i>	<i>1.9</i>	<i>-8.5</i>	<i>-6.3</i>	<i>4.9</i>	<i>-3.7</i>	<i>-2.6</i>	<i>14.8</i>	<i>17.2</i>	<i>10.5</i>	<i>11.2</i>	<i>20.1</i>
<b>MPA-Tribal Cohort**: Annual Average FTE* History</b>	<b>98-99</b>	<b>99-00</b>	<b>00-01</b>	<b>01-02</b>	<b>02-03</b>	<b>03-04</b>	<b>04-05</b>	<b>05-06</b>	<b>06-07**</b>	<b>07-08</b>	<b>08-09</b>	<b>09-10</b>
<b>Actual Annual Average FTE</b>					<b>6.9</b>	<b>11.1</b>	<b>15.9</b>	<b>16.3</b>	<b>21.3</b>	<b>21.5</b>	<b>18.7</b>	<b>18.2</b>
<b>Target Annual Average FTE</b>					25.0	25.0	25.0	25.0	25.0	25.0	22.0	22.0
<i>difference: actual FTE - target FTE</i>					<i>-18.1</i>	<i>-13.9</i>	<i>-9.1</i>	<i>-8.7</i>	<i>-3.7</i>	<i>-3.5</i>	<i>-3.3</i>	<i>-3.8</i>

\*Annual Average FTE includes only state-support FTE (state employee waivers excluded)

\*\*Beginning in 06/07, TESC degree-seeking employees who are admitted as full status degree-seeking students are counted toward FTE targets.

\*\*\*MPA-Tribal cohort includes all credits taken by matriculated MPA-Tribal cohort students (regardless of whether the credits were earned exclusively in Tribal coursework.)

\*\*\*\*Beginning in Fall 2008, 2-credit short-course electives were moved into MPA curriculum from Extended Education

Fall 2002, Core is changed from 8 credits to 4 credits/quarter beginning with entering cohort.

Fall 2009, Core is changed from 4 credits to 6 credits/quarter beginning with entering cohort.



## Masters of Public Administration Cohort Retention and Graduation

### Admission, Retention, and Graduation of Entering Student Cohorts Fall 1998-Fall 2016

Fall Quarter	1998	1999	2000	2001	2002	2003	2004	2005	2006	2007	2008	2009
<b># of New Degree-seeking MPA Students</b>	38	35	29	32	49	42	59	44	56	50	73	56
							20 TMP 39 OLY		19 TMP 37 OLY		18 TMP 55 OLY	
<b>Fall-to-Fall Retention</b>	<b>F98-F99</b>	<b>F99-F00</b>	<b>F00-F01</b>	<b>F01-F02</b>	<b>F02-F03</b>	<b>F03-F04</b>	<b>F04-F05</b>	<b>F05-F06</b>	<b>F06-F07</b>	<b>F07-F08</b>	<b>F08-F09</b>	<b>F09-10</b>
<b># of New MPA retained to 2nd fall qtr</b>	33	26	23	29	39	36	54	40	47	42	63	51
<i>Retention rate to 2nd fall quarter</i>	86.8%	74.3%	79.3%	90.6%	79.6%	85.7%	91.5%	90.9%	83.9%	84.0%	86.3%	91.1%
							85.0% TRI 94.9% GEN		84.2% TRI 83.8% GEN		77.8% TRI 89.1% GEN	
<b>Graduation Rate for New MPA Admits</b>	<b>Degree by summer 00</b>	<b>Degree by summer 01</b>	<b>Degree by summer 02</b>	<b>Degree by summer 03</b>	<b>Degree by summer 04</b>	<b>Degree by summer 05</b>	<b>Degree by summer 06</b>	<b>Degree by summer 07</b>	<b>Degree by summer 08</b>	<b>Degree by summer 09</b>	<b>Degree by summer 10</b>	<b>Degree by summer 11</b>
<b># of New MPA who earned degree within 2 years</b>	30	22	20	26	23	10	36	23	35	21	46	32
<i>Graduation rate within 2 years</i>	78.9%	62.9%	69.0%	81.3%	46.9%	23.8%	61.0%	52.3%	62.5%	42.0%	63.0%	57.1%
	<b>Degree by summer 01</b>	<b>Degree by summer 02</b>	<b>Degree by summer 03</b>	<b>Degree by summer 04</b>	<b>Degree by summer 05</b>	<b>Degree by summer 06</b>	<b>Degree by summer 07</b>	<b>Degree by summer 08</b>	<b>Degree by summer 09</b>	<b>Degree by summer 10</b>	<b>Degree by summer 11</b>	<b>Degree by summer 12</b>
<b># of New MPA who earned degree within 3 years</b>	31	24	21	26	34	21	49	33	43	32	58	49
<i>Graduation rate within 3 years (cumulative)</i>	81.6%	68.6%	72.4%	81.3%	69.4%	50.0%	83.1%	75.0%	76.8%	64.0%	79.5%	87.5%
	<b>Degree by summer 02</b>	<b>Degree by summer 03</b>	<b>Degree by summer 04</b>	<b>Degree by summer 05</b>	<b>Degree by summer 06</b>	<b>Degree by summer 07</b>	<b>Degree by summer 08</b>	<b>Degree by summer 09</b>	<b>Degree by summer 10</b>	<b>Degree by summer 11</b>	<b>Degree by summer 12</b>	<b>Degree by summer 13</b>
<b># of New MPA who earned degree within 4 years</b>	31	25	22	26	38	29	51	35	46	36	60	51
<i>Graduation rate within 4 years (cumulative)</i>	81.6%	71.4%	75.9%	81.3%	77.6%	69.0%	86.4%	79.5%	82.1%	72.0%	82.2%	91.1%
	<b>Degree by summer 17</b>	<b>Degree by summer 17</b>	<b>Degree by summer 17</b>	<b>Degree by summer 17</b>	<b>Degree by summer 17</b>	<b>Degree by summer 17</b>	<b>Degree by summer 17</b>	<b>Degree by summer 17</b>	<b>Degree by summer 17</b>	<b>Degree by summer 17</b>	<b>Degree by summer 17</b>	<b>Degree by summer 17</b>
<b># of New MPA who earned degrees to date*</b>	34	27	22	26	39	31	52	35	48	39	60	52
<i>Total Graduation rate (cumulative)</i>	89.5%	77.1%	75.9%	81.3%	79.6%	73.8%	88.1%	79.5%	85.7%	78.0%	82.2%	92.9%

\*Retention and Graduation data (AW only) updated as of 4/19/18.

MPA TOTAL graduate program admissions History 2002-2009

Completed Applications	Fall 2002	Fall 2003	Fall 2004	Fall 2005	Fall 2006	Fall 2007	Fall 2008	Fall 2009
# completed applications	68	64	78	63	91	71	121	107
# completed applications from <b>students of color*</b>	22	12	30	15	31	21	44	28
# completed applications from <b>WA residents</b>	59	57	66	53	75	69	98	96
# completed applications from <b>non-residents**</b>	4	4	8	3	8	2	10	5
# completed applications from <b>contested residency</b>	5	3	4	7	8	0	13	6

Admission	Fall 2002	Fall 2003	Fall 2004	Fall 2005	Fall 2006	Fall 2007	Fall 2008	Fall 2009
<b>Total # offered admission</b>	<b>55</b>	<b>52</b>	<b>76</b>	<b>57</b>	<b>80</b>	<b>63</b>	<b>94</b>	<b>71</b>
<b>% admitted</b>	<b>80.9%</b>	<b>81.3%</b>	<b>97.4%</b>	<b>90.5%</b>	<b>87.9%</b>	<b>88.7%</b>	<b>77.7%</b>	<b>66.4%</b>
# students of color offered admission	20	8	30	14	28	20	35	20
<b>% SOC admitted</b>	<b>90.9%</b>	<b>66.7%</b>	<b>100.0%</b>	<b>93.3%</b>	<b>90.3%</b>	<b>95.2%</b>	<b>79.5%</b>	<b>71.4%</b>
# WA residents offered admission	47	45	65	49	65	61	75	61
<b>% WA resident admitted</b>	<b>79.7%</b>	<b>78.9%</b>	<b>98.5%</b>	<b>92.5%</b>	<b>86.7%</b>	<b>88.4%</b>	<b>76.5%</b>	<b>63.5%</b>
# non-residents offered admission	4	4	7	2	8	2	8	4
<b>% non-resident admitted</b>	<b>100.0%</b>	<b>100.0%</b>	<b>87.5%</b>	<b>66.7%</b>	<b>100.0%</b>	<b>100.0%</b>	<b>80.0%</b>	<b>80.0%</b>
# contested res offered admission	4	3	4	6	7	0	11	6
<b>% contested residents admitted</b>	<b>80.0%</b>	<b>100.0%</b>	<b>100.0%</b>	<b>85.7%</b>	<b>87.5%</b>	<b>N/A</b>	<b>84.6%</b>	<b>100.0%</b>

Enrolled	Fall 2002	Fall 2003	Fall 2004	Fall 2005	Fall 2006	Fall 2007	Fall 2008	Fall 2009
<b>Total New MPA # enrolled</b>	<b>49</b>	<b>42</b>	<b>59</b>	<b>44</b>	<b>56</b>	<b>50</b>	<b>73</b>	<b>56</b>
<b>yield from admission</b>	<b>89.1%</b>	<b>80.8%</b>	<b>77.6%</b>	<b>77.2%</b>	<b>70.0%</b>	<b>79.4%</b>	<b>77.7%</b>	<b>78.9%</b>
# students of color enrolled	21	6	23	10	21	17	26	15
<b>SOC yield from admission</b>	<b>105.0%</b>	<b>75.0%</b>	<b>76.7%</b>	<b>71.4%</b>	<b>75.0%</b>	<b>85.0%</b>	<b>74.3%</b>	<b>75.0%</b>
# WA residents enrolled	43	37	55	39	49	49	63	49
<b>WA resident yield from admission</b>	<b>91.5%</b>	<b>82.2%</b>	<b>84.6%</b>	<b>79.6%</b>	<b>75.4%</b>	<b>80.3%</b>	<b>84.0%</b>	<b>80.3%</b>
# non-residents enrolled	4	3	2	1	3	1	3	2
<b>non-resident yield from admission</b>	<b>100.0%</b>	<b>75.0%</b>	<b>28.6%</b>	<b>50.0%</b>	<b>37.5%</b>	<b>50.0%</b>	<b>37.5%</b>	<b>50.0%</b>
# contested res enrolled	2	2	2	4	4	0	7	5
<b>contested res yield from admission</b>	<b>50.0%</b>	<b>66.7%</b>	<b>50.0%</b>	<b>66.7%</b>	<b>57.1%</b>	<b>NA</b>	<b>63.6%</b>	<b>83.3%</b>
# regular admission	23	15	10	14	16	9	46	19
# provisional admission	0	2	1	2	1	0	3	10
# conditional admission	26	25	48	28	39	41	24	27
<b>% conditional/provisional</b>	<b>53.1%</b>	<b>64.3%</b>	<b>83.1%</b>	<b>68.2%</b>	<b>71.4%</b>	<b>82.0%</b>	<b>37.0%</b>	<b>66.1%</b>
# Evergreen graduates	27	23	20	22	22	30	32	23
<b>% Evergreen graduates</b>	<b>55.1%</b>	<b>54.8%</b>	<b>33.9%</b>	<b>50.0%</b>	<b>39.3%</b>	<b>60.0%</b>	<b>43.8%</b>	<b>41.1%</b>

<b>TMP New Cohort</b>	identified until winter		20		19		18	
-----------------------	-------------------------	--	----	--	----	--	----	--

\*Students of Color in this presentation include African-American, Asian, Pacific Islander, Native American/Alaskan Native, Hispanic/Latino, and Multiracial students.

\*\*Non-residents include non-residents and international applicants.