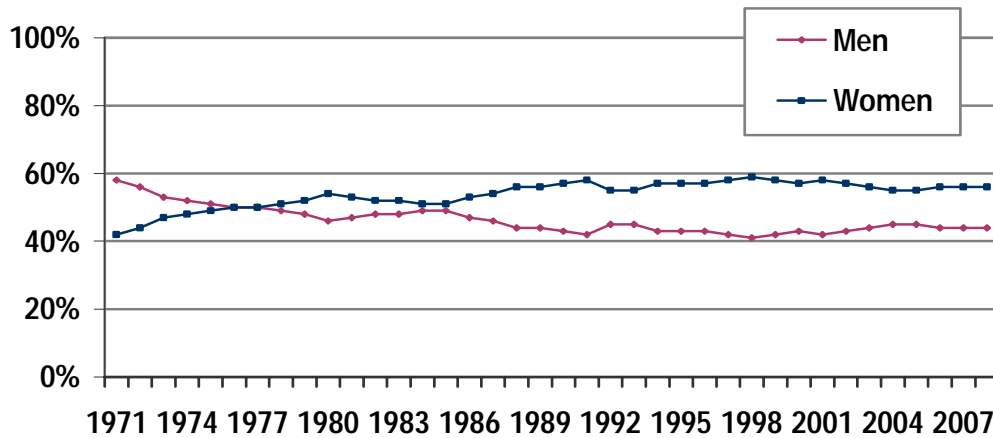


**Enrollment by Gender - Percent of Total Head Count  
Fall Quarters 1971-2008**



	Number Women	% Women	Number Men	% Men		Number Women	% Women	Number Men	% Men
1971	492	42%	686	58%	1990	1,902	57%	1,438	43%
1972	897	44%	1,138	56%	1991	1,943	58%	1,434	42%
1973	1,098	47%	1,229	53%	1992	1,889	55%	1,521	45%
1974	1,164	48%	1,282	52%	1993	1,902	55%	1,575	45%
1975	1,221	49%	1,286	51%	1994	2,057	57%	1,557	43%
1976	1,331	50%	1,305	50%	1995	2,067	57%	1,558	43%
1977	1,277	50%	1,267	50%	1996	2,128	57%	1,587	43%
1978	1,178	51%	1,144	49%	1997	2,387	58%	1,697	42%
1979	1,315	52%	1,199	48%	1998	2,478	59%	1,716	41%
1980	1,517	54%	1,288	46%	1999	2,397	58%	1,705	42%
1981	1,458	53%	1,308	47%	2000	2,369	57%	1,756	43%
1982	1,361	52%	1,250	48%	2001	2,467	58%	1,760	42%
1983	1,407	52%	1,310	48%	2002	2,494	57%	1,873	43%
1984	1,441	51%	1,385	49%	2003	2,467	56%	1,913	44%
1985	1,530	51%	1,450	49%	2004	2,422	55%	1,988	45%
1986	1,565	53%	1,400	47%	2005	2,477	55%	1,993	45%
1987	1,657	54%	1,398	46%	2006	2,475	56%	1,941	44%
1988	1,815	56%	1,435	44%	2007	2,587	56%	1,999	44%
1989	1,825	56%	1,412	44%	2008	2,621	56%	2,075	44%