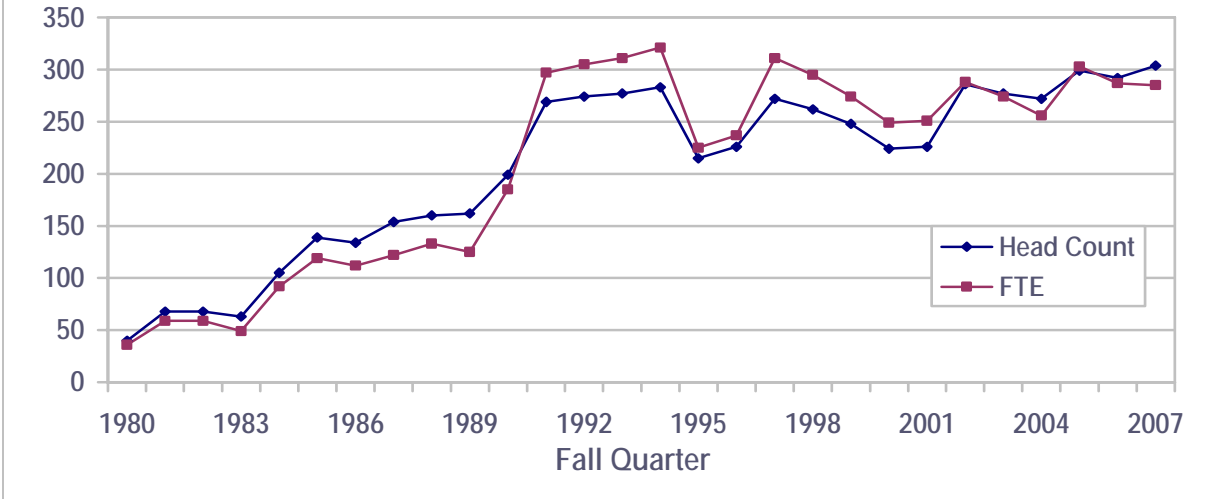


### Graduate Enrollment Fall Quarter 1980-2007



Notes: FTE excludes State Waiver enrollment. State Waiver enrollment is not considered by the State of Washington in meeting FTE goals. Beginning Fall 2002, headcount includes all students enrolled for credit per IPEDS federal reporting standards.

	<b>1971</b>	<b>1972</b>	<b>1973</b>	<b>1974</b>	<b>1975</b>	<b>1976</b>	<b>1977</b>	<b>1978</b>	<b>1979</b>	<b>1980</b>	<b>1981</b>
Headcount	0	0	0	0	0	0	0	0	0	40	68
FTE	0	0	0	0	0	0	0	0	0	36	59
	<b>1982</b>	<b>1983</b>	<b>1984</b>	<b>1985</b>	<b>1986</b>	<b>1987</b>	<b>1988</b>	<b>1989</b>	<b>1990</b>	<b>1991</b>	<b>1992</b>
Headcount	68	63	105	139	134	154	160	162	199	269	274
FTE	59	49	92	119	112	122	133	125	185	297	305
	<b>1993</b>	<b>1994</b>	<b>1995</b>	<b>1996</b>	<b>1997</b>	<b>1998</b>	<b>1999</b>	<b>2000</b>	<b>2001</b>	<b>2002</b>	<b>2003</b>
Headcount	277	283	215	226	272	262	248	224	226	286	277
FTE	311	321	225	256	311	295	274	249	251	292	280
	<b>2004</b>	<b>2005</b>	<b>2006</b>	<b>2007</b>							
Headcount	272	299	292	304							
FTE	256	303	287	285							