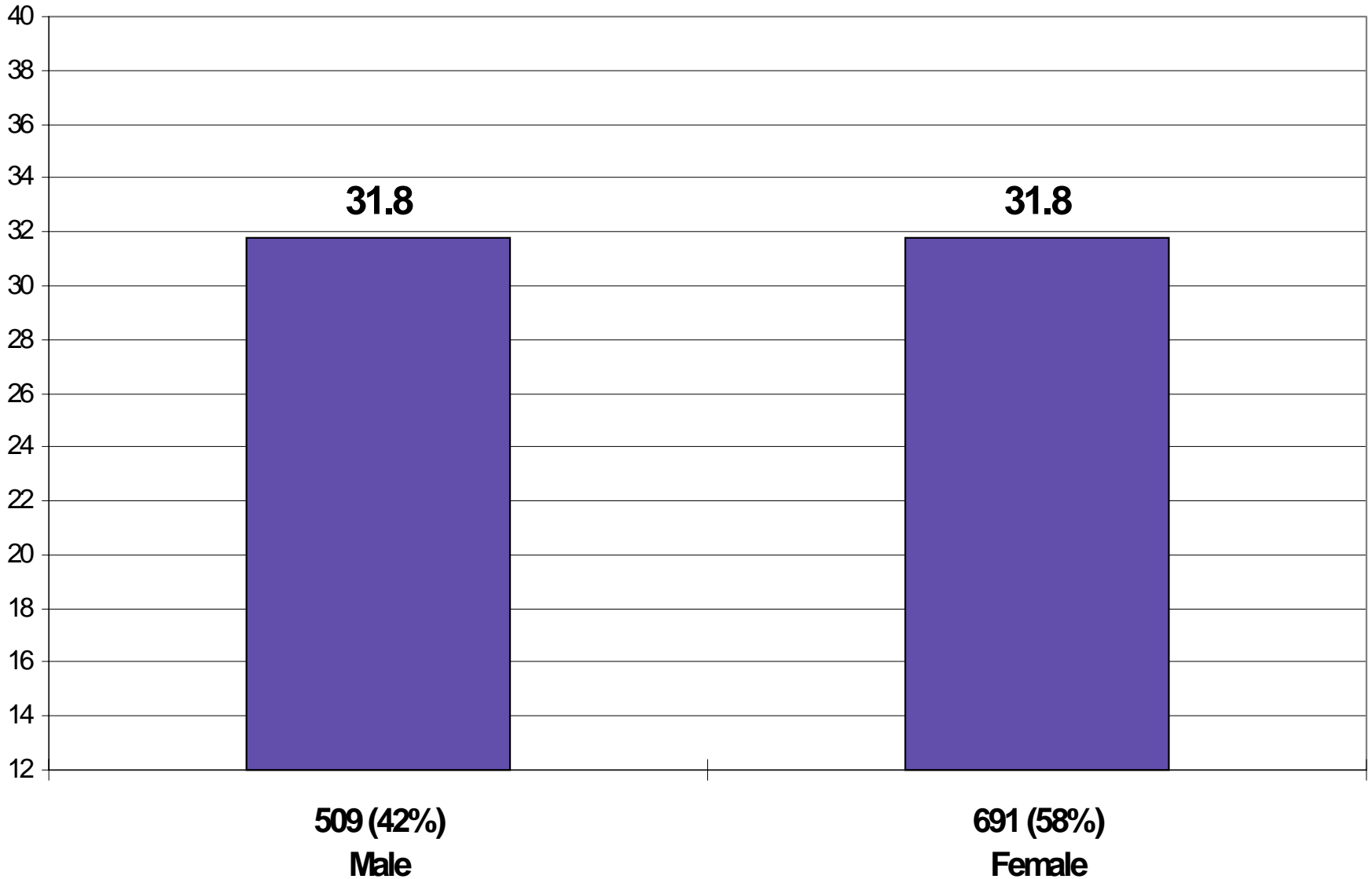
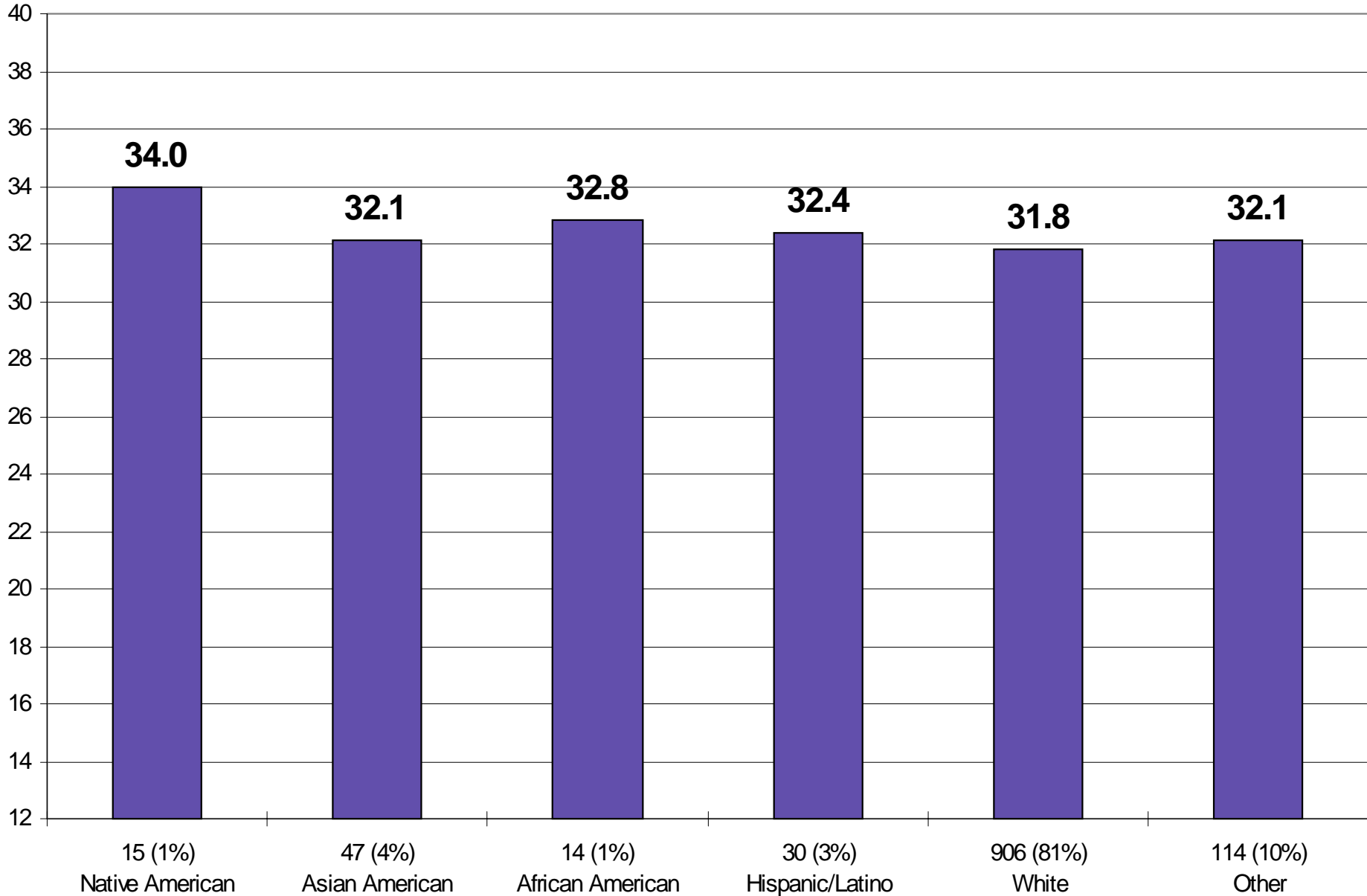


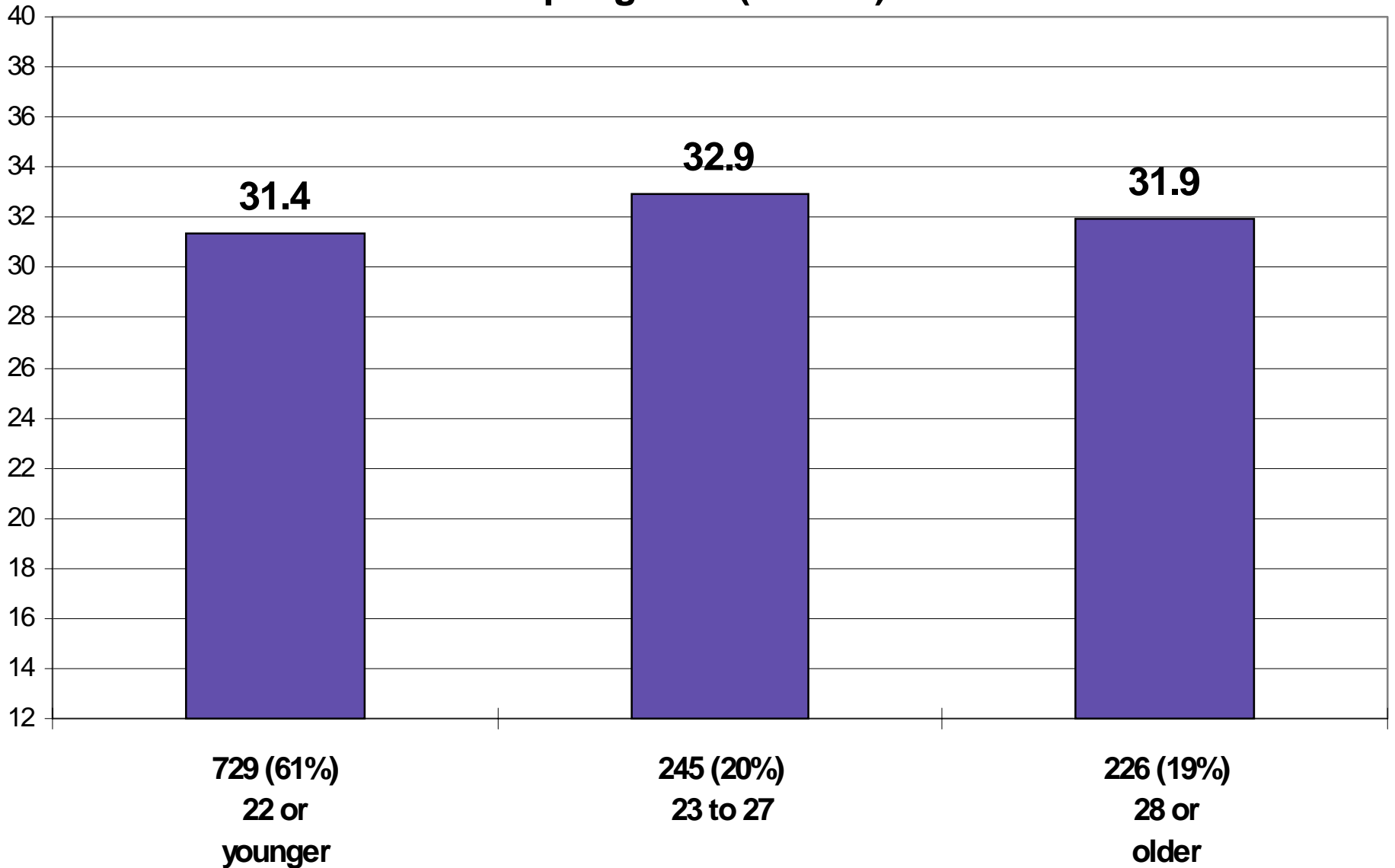
**Chart A. CSEQ: Mean Life-Long Learning Index
by Gender
Spring 1997 (n=1200)**



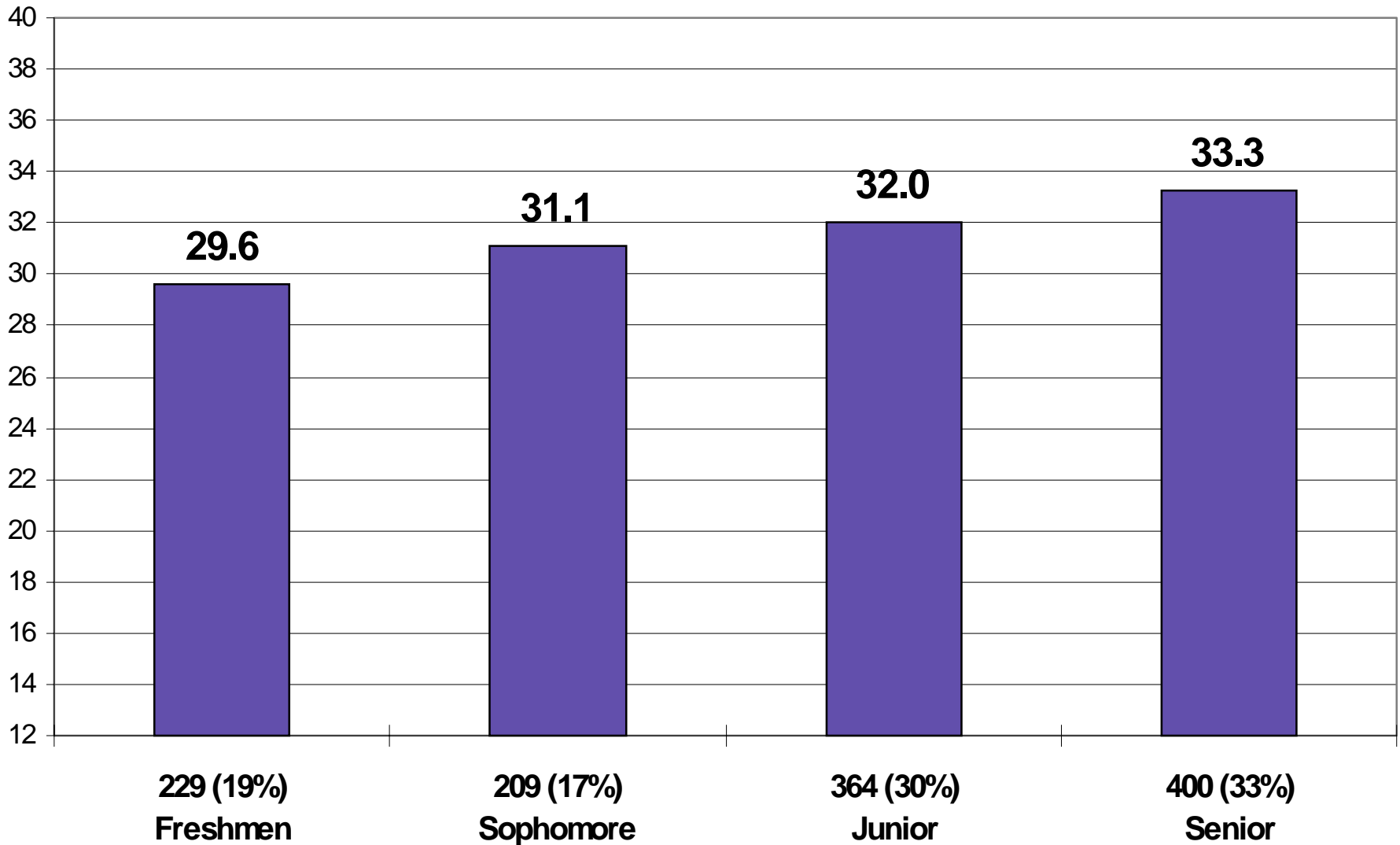
**Chart B. CSEQ: Mean Life-Long Learning Index
by Racial/Ethnic Group
Spring 1997 (n=1126)**



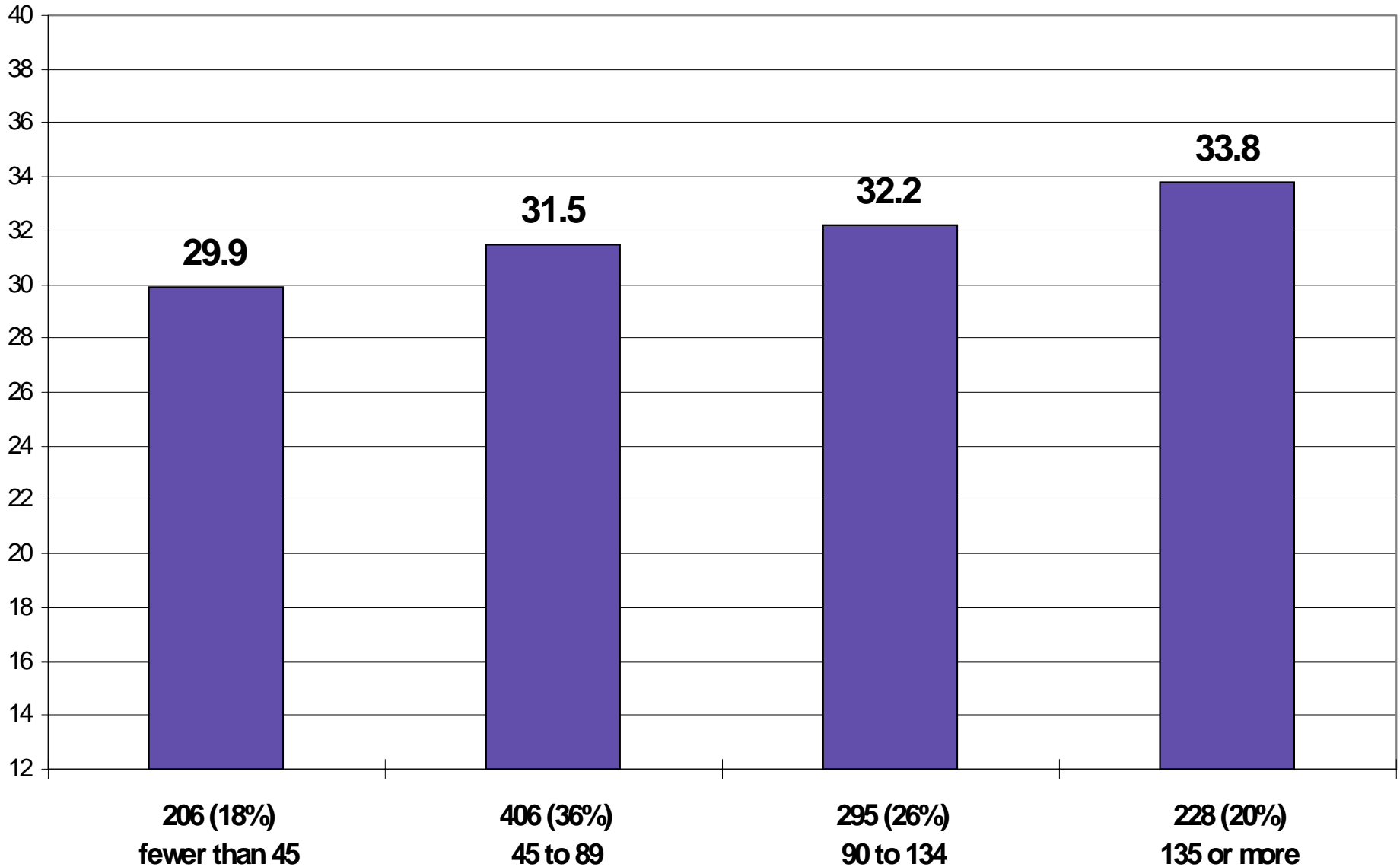
**Chart C. CSEQ: Mean Life-Long Learning Index
by Age Group
Spring 1997 (n=1200)**



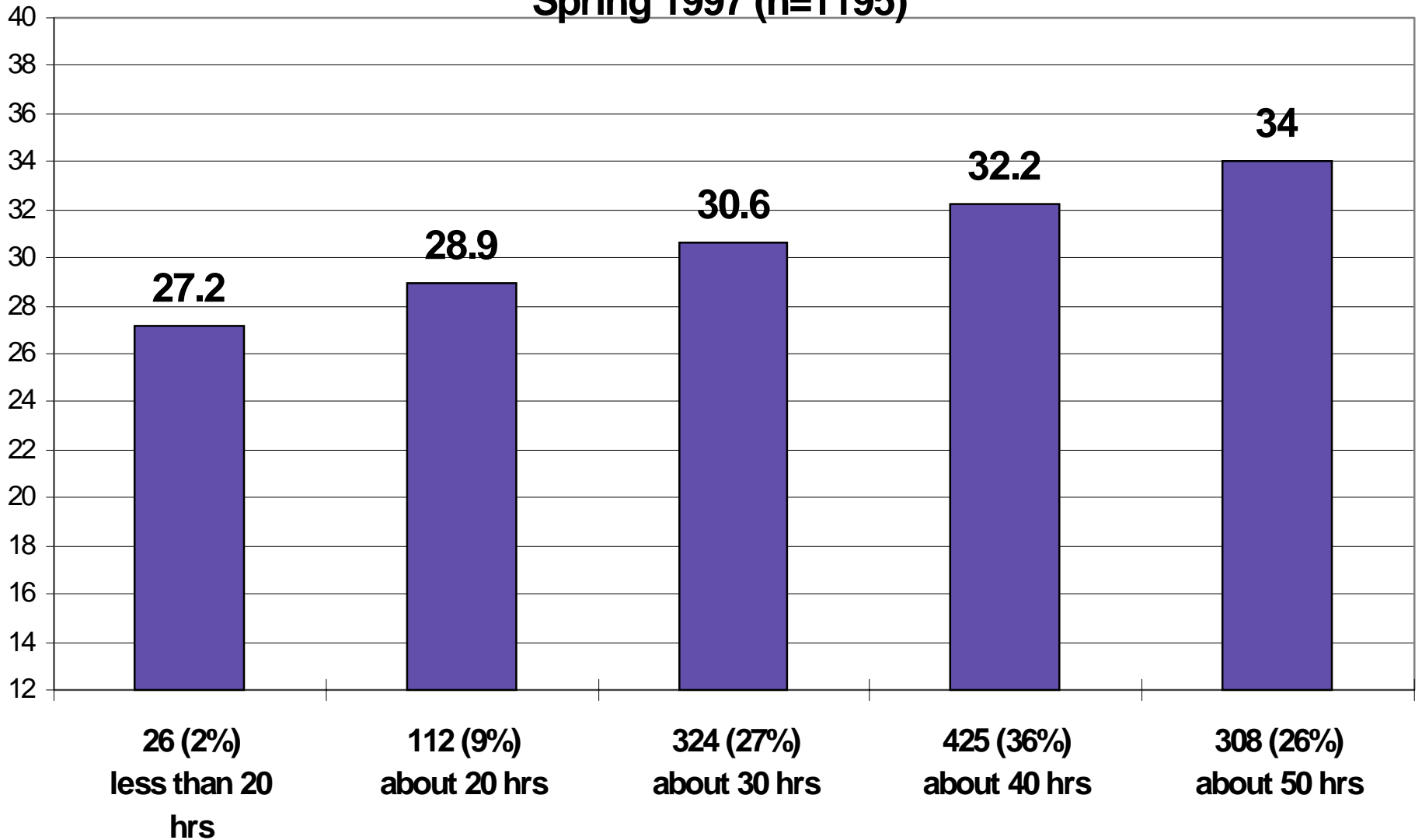
**Chart D. CSEQ: Mean Life-Long Learning Index
by Class Standing
Spring 1997 (n=1202)**



**Chart E. CSEQ: Mean Life-Long Learning Index by
Number of Credits Earned at TESC
Spring 1997 (n=1135)**



**Chart F. CSEQ: Mean Life-Long Learning Index
by Weekly Hours of Study
Spring 1997 (n=1195)**



**Chart G. CSEQ: Mean Life-Long Learning by Relationships with Faculty (1=low, 7=high)
Spring 1997 (n=196)**

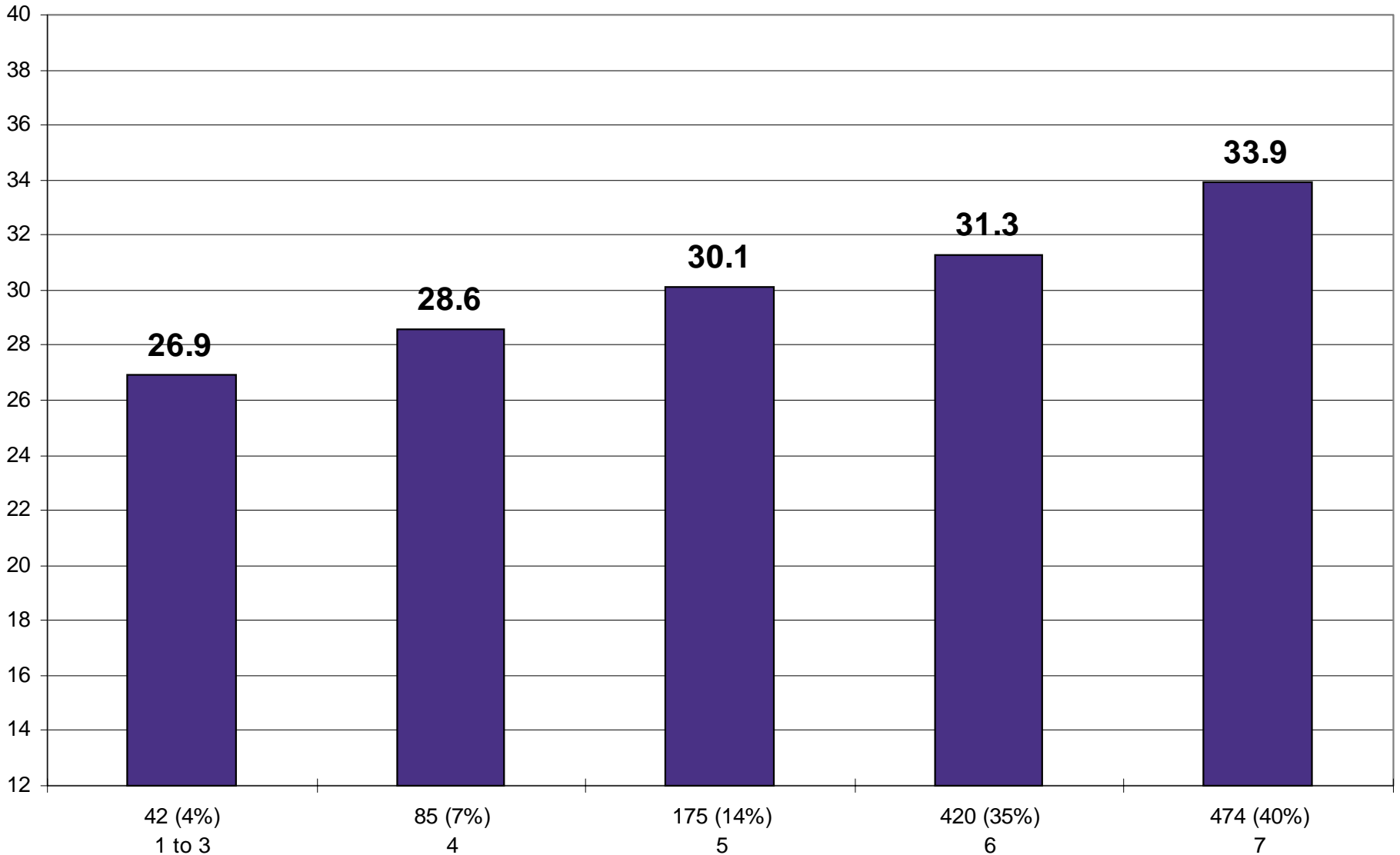


Chart H. CSEQ: Mean Life-Long Learning by Relationships with Other Students (1=low, 7=high) Spring 1997 (n=1197)

